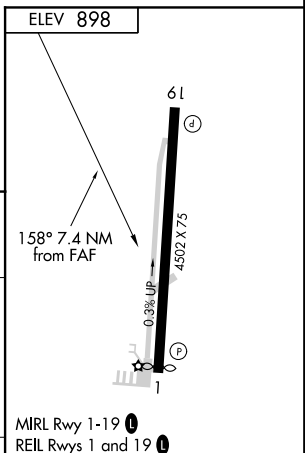
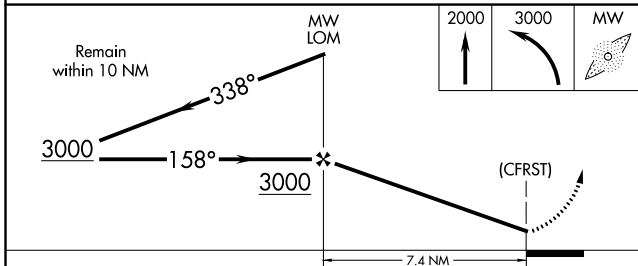
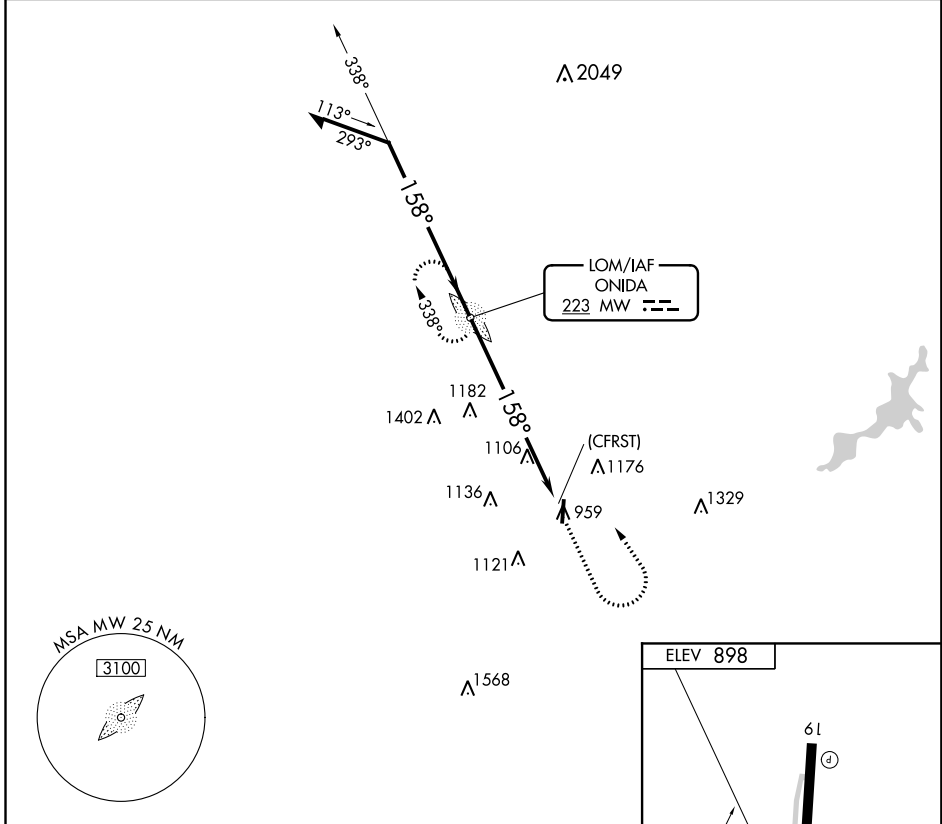


LOM MW 223	APP CRS 158°	Rwy ldg TDZE Apt Elev	N/A N/A 898
----------------------	------------------------	-----------------------------	--

NDB-A

WARREN COUNTY/JOHN LANE FIELD (I68)

RADAR required for procedure entry.		MISSED APPROACH: Climb to 2000 then climbing left turn to 3000 direct MW LOM and hold.	
▼ When Circling to Rwy 19 at night, operational VGSI required, remain on or above VGSI glidepath until threshold. ▲ NA		AWOS-3 120.55	COLUMBUS APP CON 118.85 269.275
		CLNC DEL 119.4	UNICOM 123.075 (CTAF) 0



CATEGORY	A		B		C		D		
	1680-1	782 (800-1)	1680-2¼	782 (800-2¼)	1680-2½	782 (800-2½)	7.4 NM		
CIRCLING	1680-1		782 (800-1)		1680-2¼		782 (800-2¼)		
	1680-1		782 (800-1)		1680-2¼		782 (800-2¼)		
ELEV 898 MRL Rwy 1-19 0 REIL Rwys 1 and 19 0 FAF to MAP 7.4 NM									
Knots		60	90	120	150	180			
Min:Sec		7:24	4:56	3:42	2:58	2:28			

EC-2, 18 JUN 2020 to 16 JUL 2020

EC-2, 18 JUN 2020 to 16 JUL 2020