

APP CRS	Rwy Idg	5003
185°	TDZE	978
	Apt Elev	979

RNAV (GPS) Y RWY 18

WINCHESTER MUNI (BGF)

RNP APCH.

MISSED APPROACH: Climbing right turn to 4000 direct ZEDUX and hold.

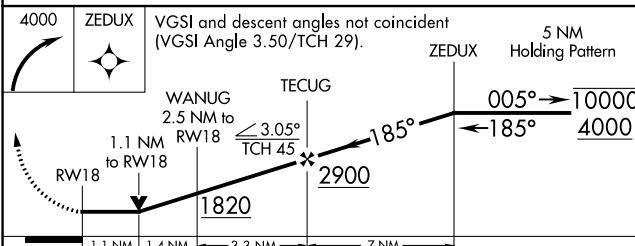
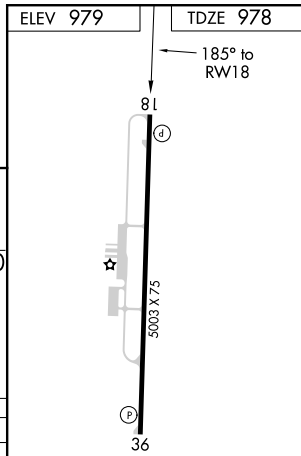
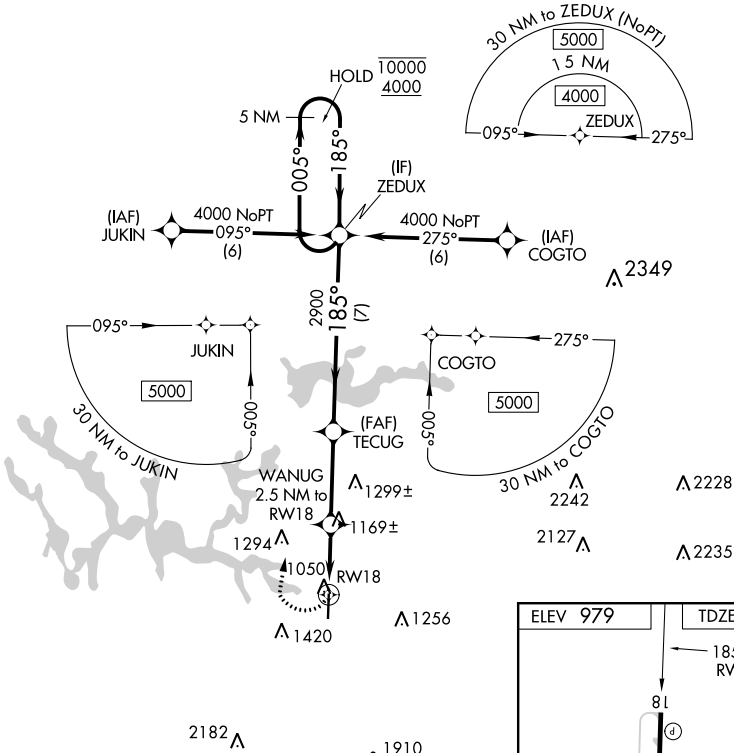
⚠ Rwy 18 helicopter visibility reduction below 3/4 SM NA.

AWOS-3
121.675

MEMPHIS CENTER
128.15 323.125

GCO
121.725

UNICOM
122.8 (CTAF)



CATEGORY	A	B	C	D
LNAV MDA	1420-1	442 (500-1)	1420-1 1/4 442 (500-1 1/4)	1420-1 1/2 442 (500-1 1/2)
CIRCLING	1460-1	481 (500-1)	1540-1 1/2 561 (600-1 1/2)	1780-2 1/2 801 (900-2 1/2)

MIRL Rwy 18-36
REIL Rwy 18 and 36

SE-1, 18 JUN 2020 to 16 JUL 2020

SE-1, 18 JUN 2020 to 16 JUL 2020