

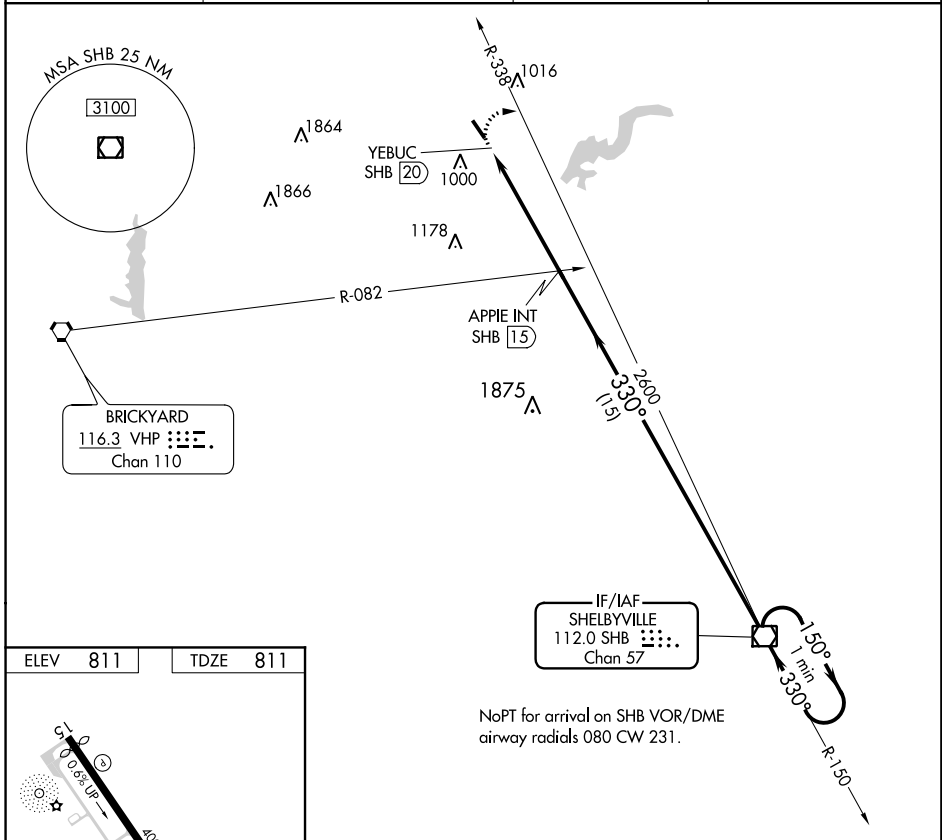
VOR/DME SHB 112.0 Chan 57	APP CRS 330°	Rwy Idg TDZE Apt Elev	4004 811 811
---	------------------------	-----------------------------	---

VOR RWY 33
INDIANAPOLIS METROPOLITAN (UMP)

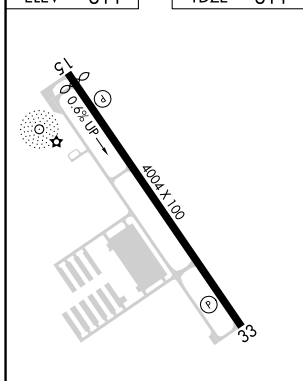
NA When local altimeter setting not received, use Indianapolis Intl altimeter setting and increase all MDA 60 feet, increase S-33 and Circling Cat C visibility to 1¾. Rwy 33 helicopter visibility reduction below ¾ SM NA.

MISSED APPROACH: Climbing right turn to 2600 on SHB VOR/DME R-338 direct SHB VOR/DME and hold.

AWOS-3 119.375	INDIANAPOLIS APP CON 127.15 317.8	CLNC DEL 121.625	UNICOM 123.0 (CTAF) 0
--------------------------	---	----------------------------	--



ELEV 811	TDZE 811
-----------------	-----------------



MIRL Rwy 15-33 **0**
REL Rwys 15 and 33 **0**
FAF to MAP 5 NM

Knots	60	90	120	150	180
Min:Sec	5:00	3:20	2:30	2:00	1:40

2600	SHB	APPIE INT SHB (15)	SHB VOR/DME	One Minute Holding Pattern
SHB R-338				
YEBUC SHB (20)		2600	330°	150°
			← 330°	→ 2600
		≤ 3.00° TCH 40	VGSI and descent angles not coincident (VGSI Angle 3.50/TCH 27).	
	0.5	5 NM	15 NM	
CATEGORY	A	B	C	D
S-33	1340-1	529 (600-1)	1340-1½ 529 (600-1½)	NA
C CIRCLING	1340-1	529 (600-1)	1340-1½ 529 (600-1½)	NA