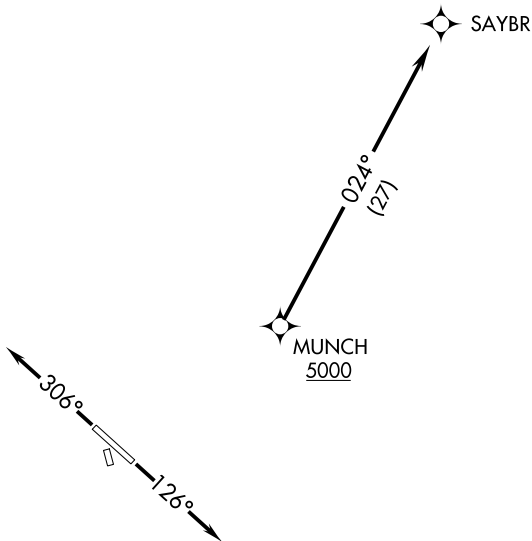


# SAYBR TWO DEPARTURE (RNAV)

**TOP ALTITUDE:  
ASSIGNED BY ATC**

AWOS-3  
118.825  
CLNC DEL  
126.025 when tower closed  
EXECUTIVE TOWER ★  
120.3 (CTAF)  
AUSTIN DEP CON  
127.225 317.65

**TAKEOFF MINIMUMS:**  
Rwys 16, 34: NA-Environmental.  
Rwys 13, 31: Standard.



- NOTE: RADAR required.
- NOTE: DME/DME/IRU or GPS required.
- NOTE: RNAV-1
- NOTE: For DFW Terminal Area Arrivals at FL230 or below only.

NOTE: Chart not to scale.

## DEPARTURE ROUTE DESCRIPTION

**TAKEOFF RWY 13:** Climb heading 126° or as assigned by ATC for RADAR vectors to cross MUNCH at or above 5000, thence. . . .

**TAKEOFF RWY 31:** Climb heading 306° or as assigned by ATC for RADAR vectors to cross MUNCH at or above 5000, thence. . . .

. . . .on track 024° to SAYBR. Maintain altitude assigned by ATC.  
Expect filed altitude 10 minutes after departure.