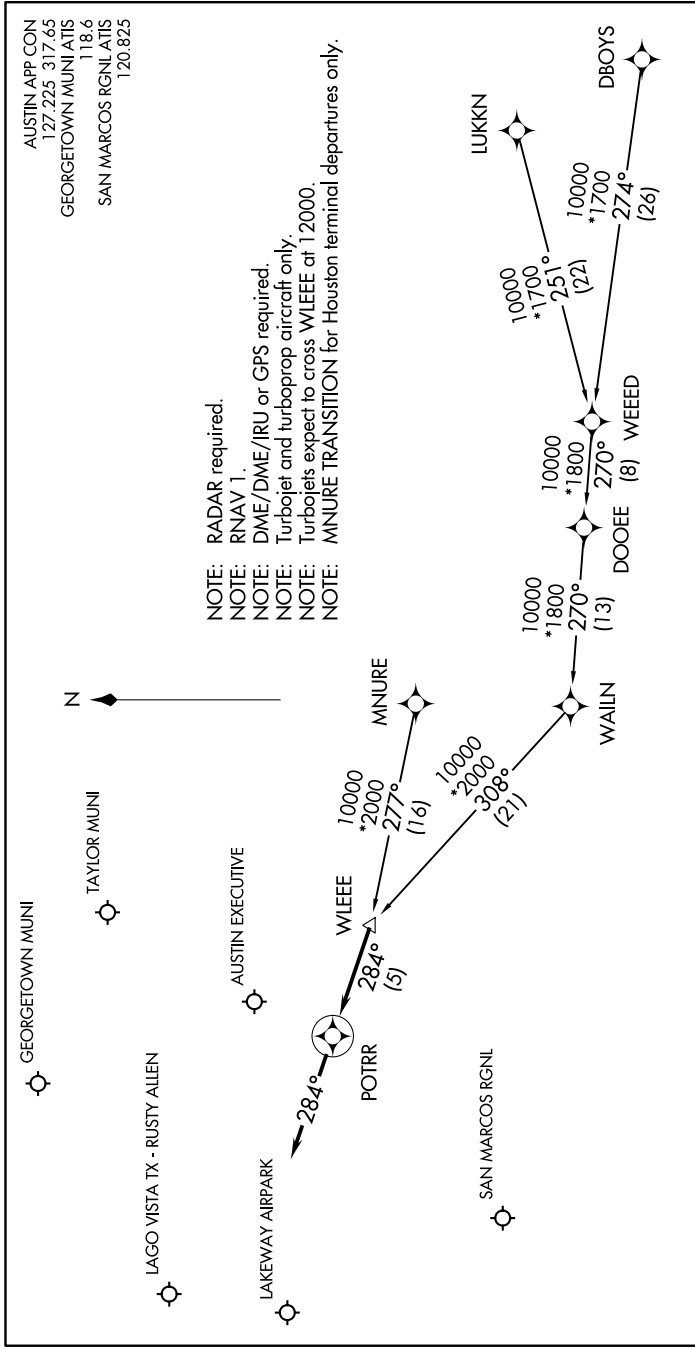


POTRR ONE ARRIVAL (RNAV)

AUSTIN, TEXAS

0202 UNF 91 01 2020 UNF 18 18 16 JUL 2020 SC-3



NOTE: RADAR required.
 NOTE: RNAV 1.
 NOTE: DME/DME/IRU or GPS required.
 NOTE: Turbojet and turboprop aircraft only.
 NOTE: Turbojets expect to cross WLEEE at 12000.
 NOTE: MNJURE TRANSITION for Houston terminal departures only.

AUSTIN APP CON
 127.225 317.65
 GEORGETOWN MUNI ATIS
 118.6
 SAN MARCOS RGNL ATIS
 120.825

ARRIVAL ROUTE DESCRIPTION

DBOYS TRANSITION (DBOYS.POTRR1)
LUKKN TRANSITION (LUKKN.POTRR1)
MNJURE TRANSITION (MNJURE.POTRR1)
WEED TRANSITION (WEED.POTRR1)

LANDING ALL AIRPORTS: From WLEEE on track 284° to POTRR, then on track 284°. Expect RADAR vectors to final approach course.

POTRR ONE ARRIVAL (RNAV)

AUSTIN, TEXAS

SC-3, 18 JUN 2020 to 16 JUL 2020