

WAAS CH 87104 W18A	APP CRS 182°	Rwy Idg TDZE Apt Elev	4999 418 418
--	------------------------	-----------------------------	---

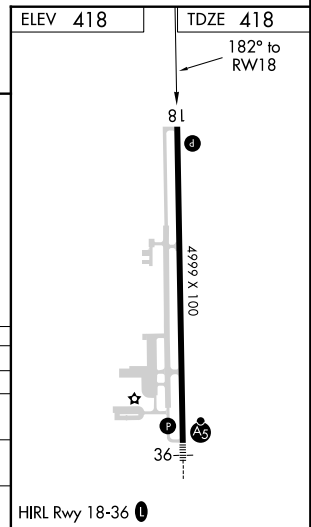
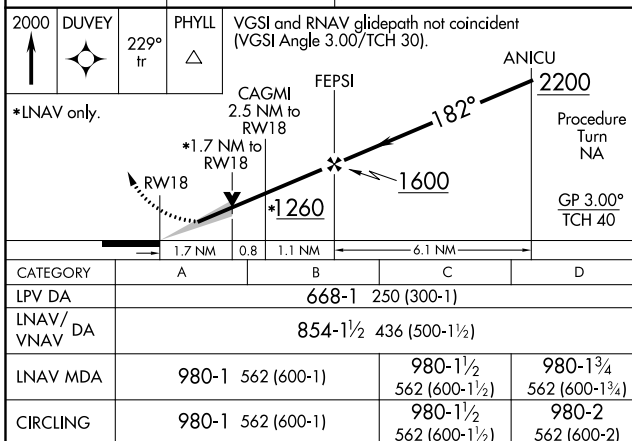
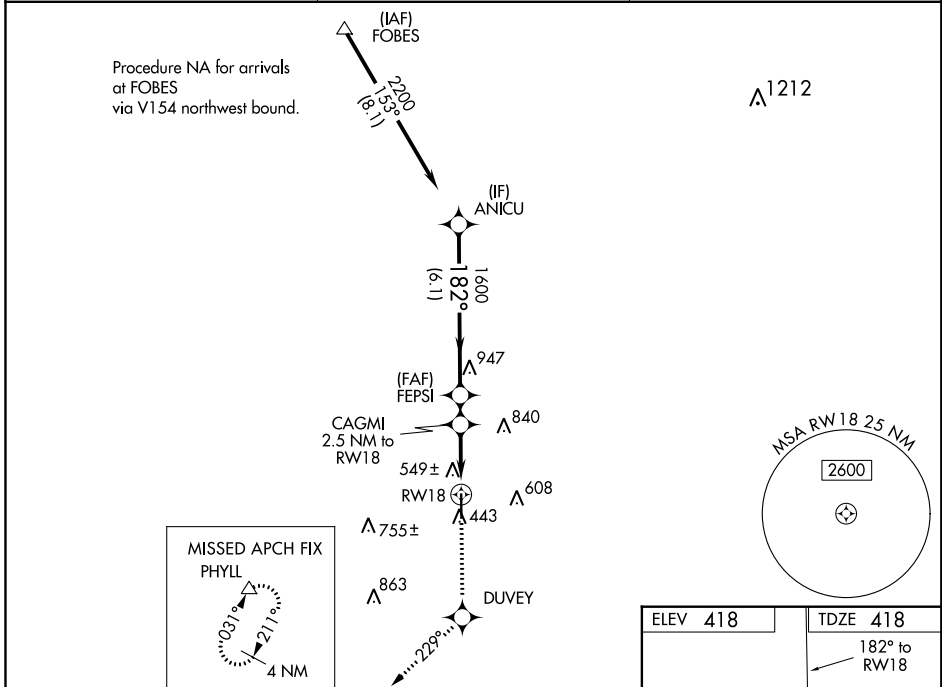
RNAV (GPS) RWY 18

PERRY-HOUSTON COUNTY (PXE)

▽ **△** NA For uncompensated Baro-VNAV systems, LNAV/VNAV NA below -15°C (5°F) or above 47°C (116°F). DME/DME RNP-0.3 NA. If local altimeter setting not received, procedure NA.

MISSED APPROACH: Climb to 2000 direct DUVEY and via 229° track to PHYLL and hold.

AWOS-3 123.825	ATLANTA APP CON ★ 124.2 279.6	UNICOM 122.725 (CTAF) 0
--------------------------	---	-----------------------------------



SE-4, 18 JUN 2020 to 16 JUL 2020

SE-4, 18 JUN 2020 to 16 JUL 2020