

LOC I-PXE <b>109.15</b>	APP CRS <b>002°</b>	Rwy ldg TDZE <b>417</b>	<b>4999</b>
		Apt Elev	<b>418</b>

# ILS or LOC RWY 36

PERRY-HOUSTON COUNTY (PXE)

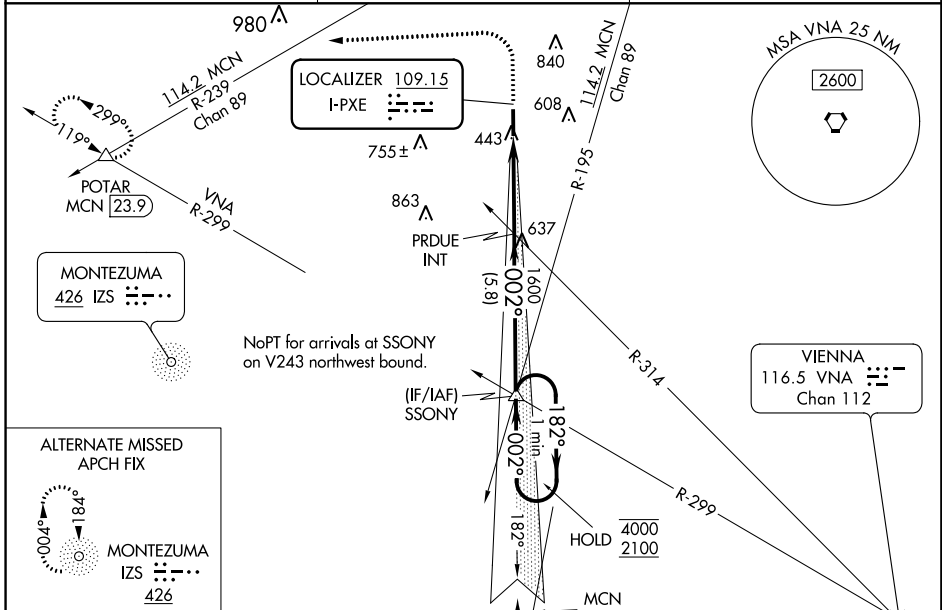
**NA** Autopilot coupled approach NA below 900. Rwy 36 helicopter visibility reduction below 3/4 SM NA. When local altimeter setting not received use Macon altimeter setting and increase DA to 789 and all MDA 40 feet. For inop ALS, increase S-LOC 36 Cats A/B visibility to 1 SM and Cats C/D to 1 3/8 SM. For inop ALS when using Macon altimeter setting, increase S-LOC 36 Cats A/B visibility to 1 SM.

MALSR

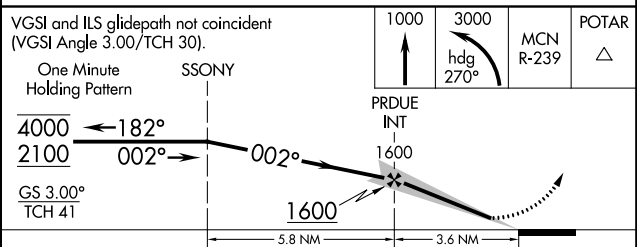
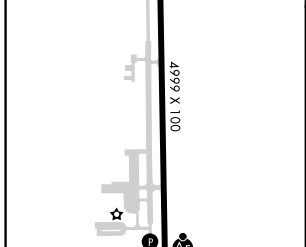


MISSED APPROACH: Climb to 1000 then climbing left turn to 3000 heading 270° and MCN VORTAC R-239 to POTAR INT/MCN 23.9 DME and hold.

AWOS-3 <b>123.825</b>	ATLANTA APP CON ★ <b>124.2 279.6</b>	UNICOM <b>122.725 (CTAF) 0</b>
--------------------------	---	-----------------------------------



ELEV <b>418</b>	TDZE <b>417</b>
-----------------	-----------------



CATEGORY	A	B	C	D
S-ILS 36	751-3/4		334 (400-3/4)	
S-LOC 36	900-3/4	483 (500-3/4)	900-1	483 (500-1)
CIRCLING	900-1	482 (500-1)	960-1 1/2 542 (600-1 1/2)	980-2 562 (600-2)

Knots	60	90	120	150	180
Min:Sec	3:36	2:24	1:48	1:26	1:12

PERRY, GEORGIA  
Orig-A 06DEC18

32°31'N-83°46'W

# PERRY-HOUSTON COUNTY (PXE) ILS or LOC RWY 36

SE-4, 18 JUN 2020 to 16 JUL 2020

SE-4, 18 JUN 2020 to 16 JUL 2020