

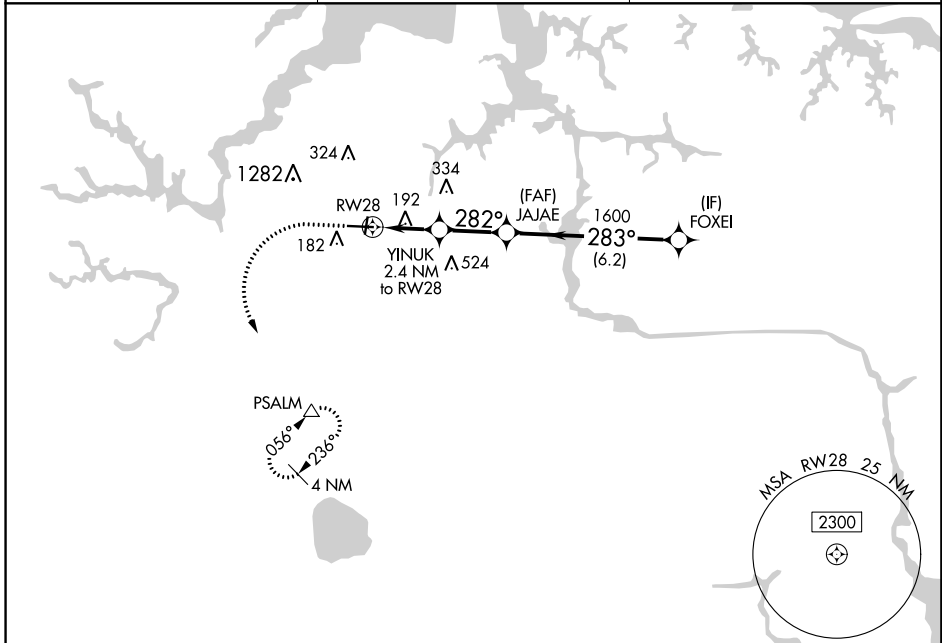
APP CRS	Rwy Idg	5350
282°	TDZE	25
	Apt Elev	28

RNAV (GPS) RWY 28

HAMPTON ROADS EXECUTIVE (PVG)

RNP APCH.	MISSED APPROACH: Climb to 1600 then climbing left turn to 2500 direct PSALM and hold.
<p>▼ Circling NA to Rwys 2 and 20. Circling Cat C NA north of Rwy 10-28. Rwy 28 helicopter visibility reduction below 1 SM NA.</p>	

AWOS-3PT 118.375	NORFOLK APP CON 118.9 353.7	UNICOM 122.725 (CTAF) 0
----------------------------	---------------------------------------	-----------------------------------



NE-3, 18 JUN 2020 to 16 JUL 2020

NE-3, 18 JUN 2020 to 16 JUL 2020

ELEV 28		TDZE 25	
<p>1600 ↑</p> <p>2500 ↘</p> <p>PSALM △</p> <p>Visual Segment - Obstacles.</p>	<p>YINUK 2.4 NM to RW28</p> <p>JAJAE 1600</p> <p>FOXEI 2000</p>		
<p>RW28</p> <p>1.2 NM to RW28</p> <p>1.2 NM</p> <p>2.4 NM</p> <p>6.2 NM</p>	<p>820</p> <p>282°</p> <p>283°</p>		
CATEGORY	A	B	C
LNVA MDA	460-1	435 (500-1)	460-1¼ 435 (500-1¼)
Ⓢ CIRCLING	500-1	472 (500-1)	780-2 752 (800-2)
<p>FOXEI 2000</p> <p>282° to RW28</p> <p>5350 X 100</p> <p>3525</p> <p>3525</p> <p>28</p> <p>2</p> <p>10</p> <p>20</p>			
<p>HIRL Rwy 10-28 0</p> <p>MIRL Rwy 2-20 0</p> <p>REIL Rws 10 and 28 0</p>			