

# RNAV (GPS) RWY 32

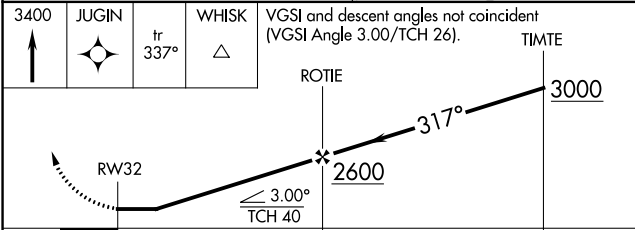
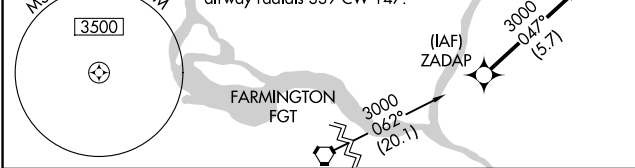
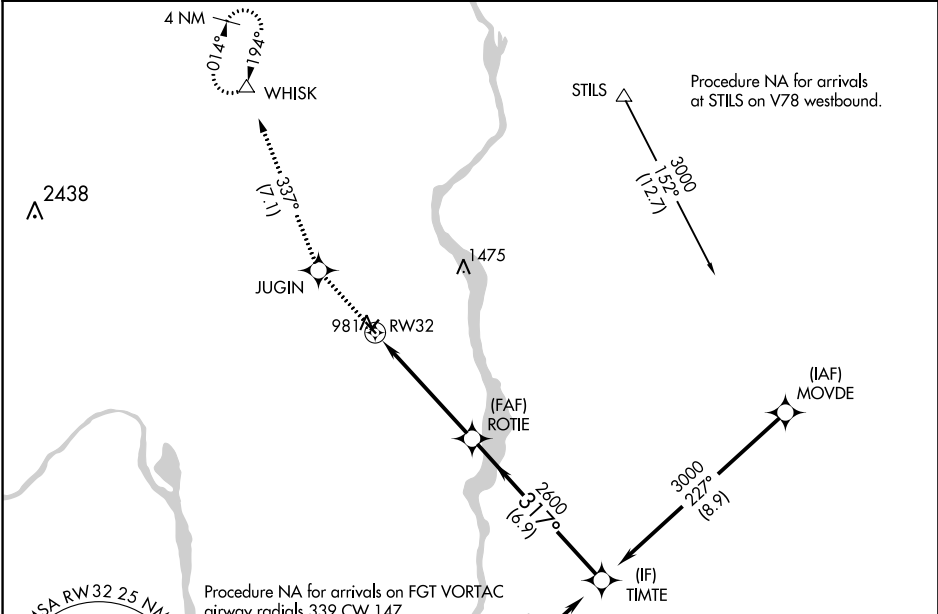
LAKE ELMO (21D)

APP CRS <b>317°</b>	Rwy Idg <b>2849</b>
	TDZE <b>926</b>
	Apt Elev <b>933</b>

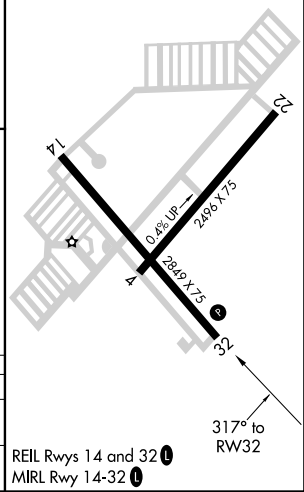
**⚠** DME/DME RNP-0.3 NA. Visibility reduction by helicopters NA. When local altimeter setting not received, use St Paul Downtown Holman Field altimeter setting and increase all MDA 60 feet, increase LNAV Cat C visibility 1/8 mile and Circling Cat C visibility 1/4 mile. Circling Rwy 14/22 NA at night. When VGSI inoperative, Straight-In/Circling Rwy 32 procedure NA at night.

**⚠** MISSED APPROACH: Climb to 3400 direct JUGIN and on track 337° to WHISK and hold.

AWOS-3 <b>120.075</b>	MINNEAPOLIS APP CON <b>121.2 335.65</b>	CINC DEL <b>118.625</b>	UNICOM <b>122.8 (CTAF) 0</b>
--------------------------	--	----------------------------	---------------------------------



ELEV 933	TDZE 926
----------	----------



CATEGORY	A	B	C	D
LNAV MDA	1500-1	574 (600-1)	1500-1 1/8 574 (600-1 1/8)	NA
CIRCLING	1500-1 567 (600-1)	1560-1 627 (700-1)	1600-1 3/4 667 (700-1 3/4)	NA

NC-1, 18 JUN 2020 to 16 JUL 2020

NC-1, 18 JUN 2020 to 16 JUL 2020