

# NDB RWY 4

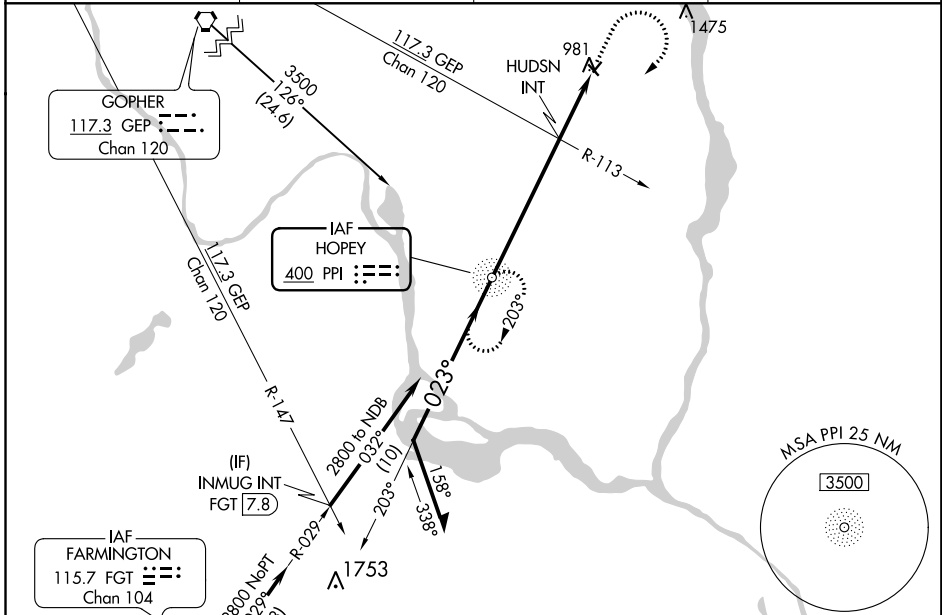
LAKE ELMO (21D)

NDB PPI <b>400</b>	APP CRS <b>023°</b>	Rwy Idg <b>2496</b>
		TDZE <b>933</b>
		Apt Elev <b>933</b>

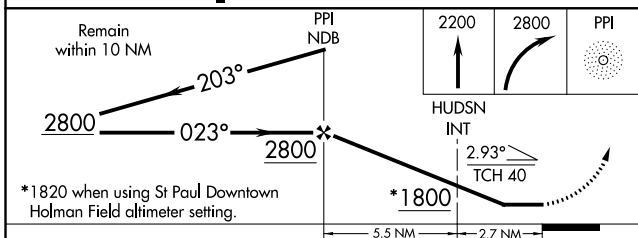
**▼** Straight-in minimums NA at night. Visibility reduction by helicopters NA. When local altimeter setting not received, use St Paul Downtown Holman Field altimeter setting and increase all MDA 60 feet, increase S-4 Cat A and Circling Cat C visibility ¼ mile. HUDSN fix minimums; increase all Cats C visibility ½ mile. Circling Rwys 14/22 NA at night. When VGSI inoperative, Circling Rwy 32 NA at night.

**MISSED APPROACH:** Climb to 2200 then climbing right turn to 2800 direct PPI NDB and hold.

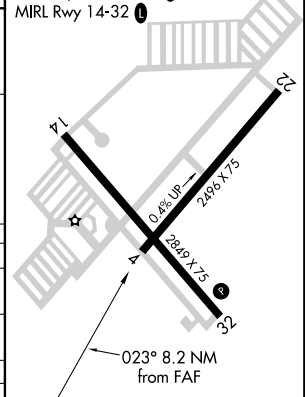
AWOS-3 <b>120.075</b>	MINNEAPOLIS APP CON <b>121.2 335.65</b>	CLNC DEL <b>118.625</b>	UNICOM <b>122.8 (CTAF) 0</b>
--------------------------	--	----------------------------	---------------------------------



Procedure NA for arrivals on FGT VORTAC airway radials 339 CW 071.



ELEV 933	TDZE 933
REIL Rwys 14 and 32 0	MIRL Rwy 14-32 0



CATEGORY	A	B	C	D
S-4	1800-1 867 (900-1)	1800-1¼ 867 (900-1¼)	1800-2½ 867 (900-2½)	NA
CIRCLING	1800-1¼	867 (900-1¼)	1800-2½ 867 (900-2½)	NA
HUDSN FIX MINIMUMS				
S-4	1600-1	667 (700-1)	1600-1⅞ 667 (700-1⅞)	NA
CIRCLING	1600-1	667 (700-1)	1600-1⅞ 667 (700-1⅞)	NA

FAF to MAP 8.2 NM					
Knots	60	90	120	150	180
Min:Sec	8:12	5:28	4:06	3:17	2:44

NC-1, 18 JUN 2020 to 16 JUL 2020

NC-1, 18 JUN 2020 to 16 JUL 2020