

WAAS CH <b>97321</b> <b>W01A</b>	APP CRS <b>010°</b>	Rwy Idg <b>5102</b> TDZE <b>626</b> Apt Elev <b>638</b>
--	------------------------	---

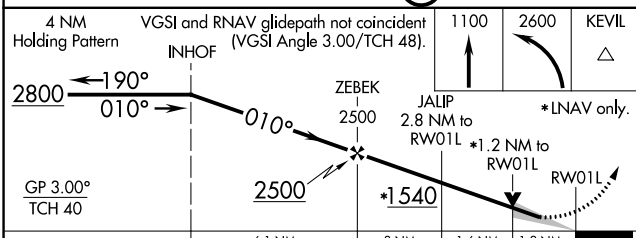
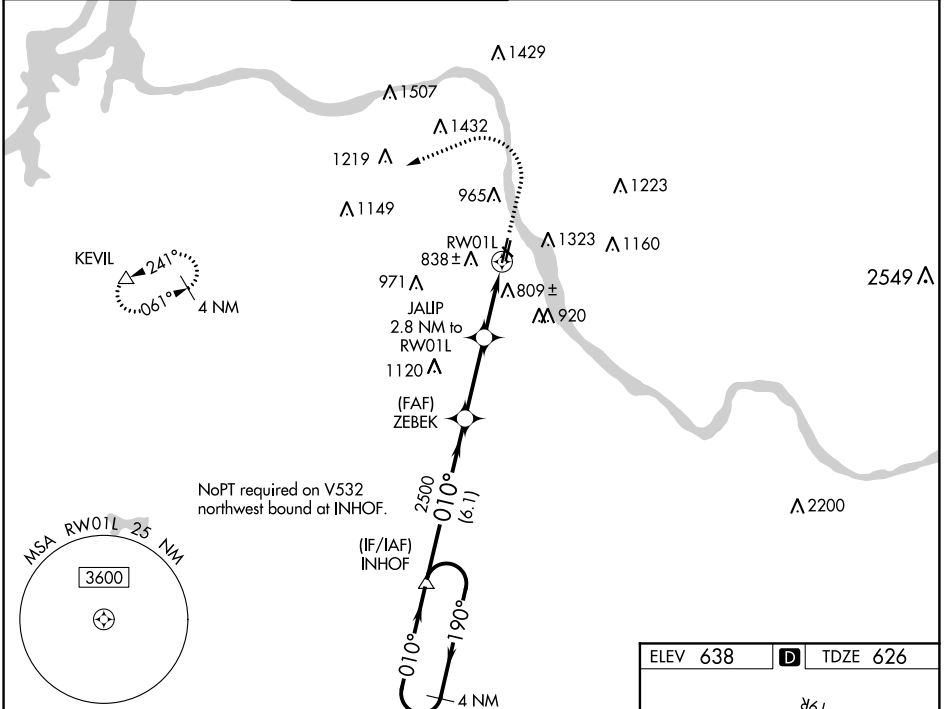
# RNAV (GPS) RWY 1L

RICHARD LLOYD JONES JR (RVS)

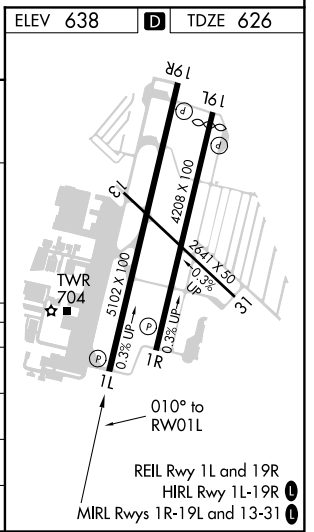
**⚠** For uncompensated Baro-VNAV systems, LNAV/VNAV NA below -12°C (11°F) or above 54°C (130°F). Circling NA northeast of Rwy 31 and 19L. DME/DME RNP-0.3 NA.

**⚠** MISSED APPROACH: Climb to 1100 then climbing left turn to 2600 direct KEVIL and hold.

ATIS <b>126.5</b>	TULSA APP CON <b>134.7</b>	RIVERSIDE TOWER ★ <b>120.3</b> (CTAF) <b>0</b>	GND CON <b>121.7</b>	CLNC DEL <b>124.5</b>	UNICOM <b>122.95</b>
----------------------	-------------------------------	---	-------------------------	--------------------------	-------------------------



CATEGORY	A	B	C	D
LPV DA	826-3/4 200 (200-3/4)			
LNAV/VNAV DA	1126-13/4 500 (500-13/4)			
LNAV MDA	1060-1	434 (500-1)	1060-1 1/4	434 (500-1 1/4)
<b>C</b> CIRCLING	1260-1 622 (700-1)	1280-1 642 (700-1)	1280-1 3/4 642 (700-1 3/4)	1380-2 1/2 742 (800-2 1/2)



SC-1, 18 JUN 2020 to 16 JUL 2020

SC-1, 18 JUN 2020 to 16 JUL 2020