

WAAS CH 77633 W35A	APP CRS 353°	Rwy Idg TDZE Apt Elev	5701 2918 2918
--	------------------------	-----------------------------	---

RNAV (GPS) RWY 35

PERRYTON OCHILTREE COUNTY (PYX)

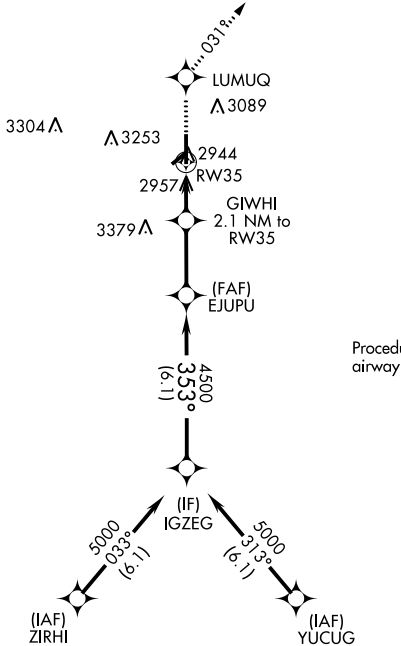
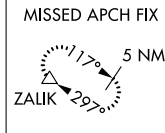
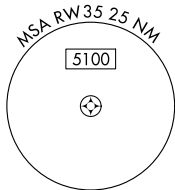
▼ Baro-VNAV and VDP NA when using Gage altimeter setting. For uncompensated Baro-VNAV systems, LNAV/VNAV NA below -20°C (-4°F) or above 54°C (130°F).
 ▲ When local altimeter setting not received, use Gage altimeter setting and increase all DAs 208 feet and MDA 220 feet; increase LPV and LNAV/VNAV Cats A and B visibility ¼ miles and Circling Cat B visibility ¼ mile. DME/DME RNP -0.3 NA. Helicopter visibility reduction below ¾ SM NA. Circling NA to Rws 4 and 22.

MISSED APPROACH: Climb to 6000 direct LUMUQ and on track 031° to ZALIK and hold.

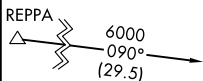
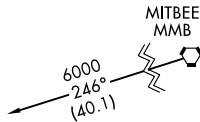
AWOS-3
118.175

KANSAS CITY CENTER
126.95 379.2

UNICOM
122.8 (CTAF) 0

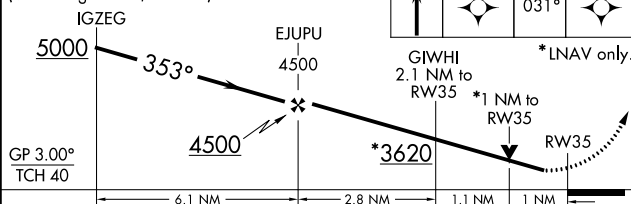


Procedure NA for arrivals on MMB VORTAC airway radials 205 CW 327.

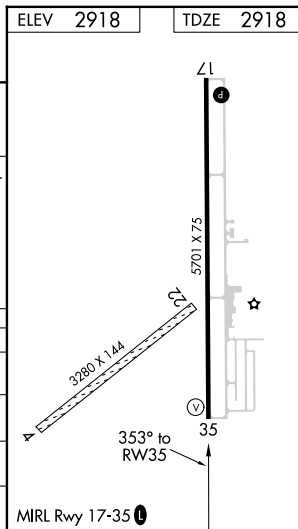


Δ 3490

VGSI and RNAV glidepath not coincident (VGSI Angle 3.50/TCH 23).



CATEGORY	A	B	C	D
LPV DA	3168-7/8	250 (300-7/8)		NA
LNAV/VNAV DA	3168-7/8	250 (300-7/8)		NA
LNAV MDA	3320-1	402 (500-1)		NA
C CIRCLING	3320-1 402 (500-1)	3580-1 662 (700-1)		NA



SC-2, 18 JUN 2020 to 16 JUL 2020

SC-2, 18 JUN 2020 to 16 JUL 2020