

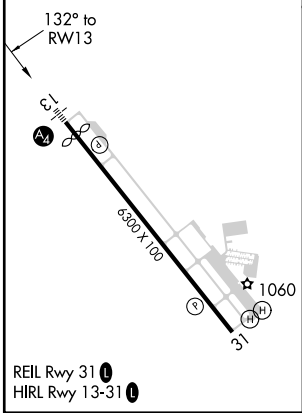
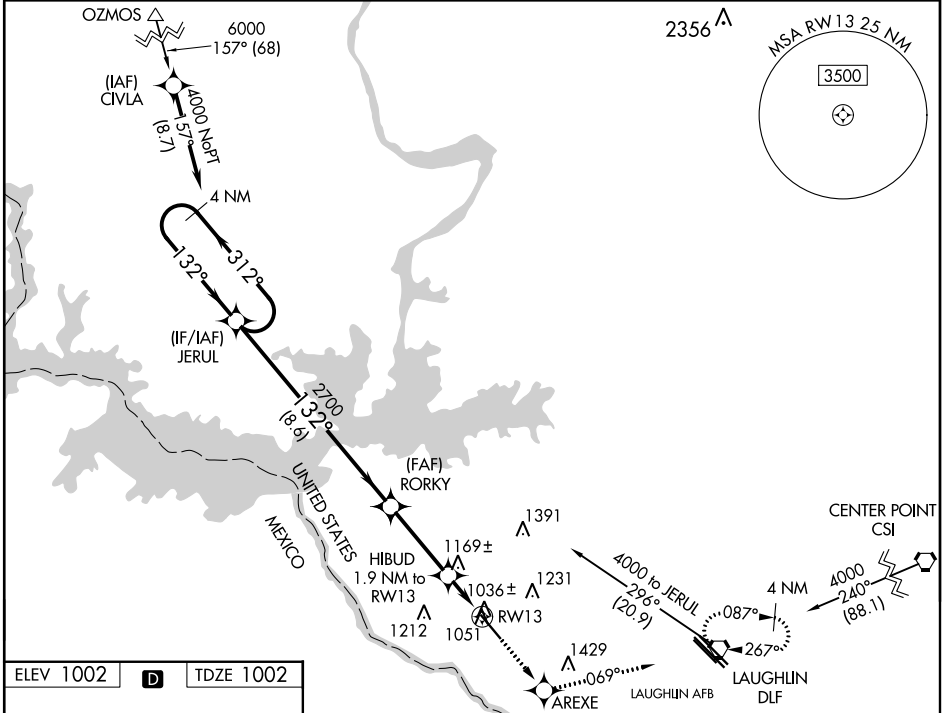
| | | | |
|-------------------------|------------------------|-----------------------------|-------------|
| WAAS CH 86499 | APP CRS 132° | Rwy Idg TDZE 1002 | 6000 |
| W13A | | Apt Elev 1002 | |

RNAV (GPS) RWY 13

DEL RIO INTL (DRT)

| | | |
|---|------------|---|
| RNP APCH. | MALS | MISSED APPROACH: Climb to 4000 direct AREXE and on 069° track to DLF VORTAC and hold, continue climb-in-hold to 4000. |
| <p>▼ Circling NA for Cat D southwest of Rwy 13-31. When local altimeter setting not received, use Laughlin AFB altimeter setting and increase all DA 30 feet and all MDA 40 feet, increase LPV visibility all Cats, LNAV visibility Cats C and D and Circling visibility Cat D ¼ mile. Baro-VNAV NA when using Laughlin AFB altimeter setting. For uncompensated Baro-VNAV systems, LNAV/VNAV NA below -17°C (2°F) or above 47°C (116°F).</p> | <p>⊙ =</p> | |

| | | | |
|------------------------|---|--------------------------|-------------------------------|
| ASOS 118.525 | DEL RIO APP CON * 119.6 259.1 | CLNC DEL 120.5 | UNICOM 122.8 (CTAF) |
|------------------------|---|--------------------------|-------------------------------|



| | | | |
|--|----------|----------|-------------|
| VGSi and RNAV glidepath not coincident (VGSi Angle 3.00/TCH 47). | | | |
| 4000 | AREXE | tr 069° | DLF |
| 4 NM | | | |
| Holding Pattern JERUL | | | |
| 4000 | ← 312° → | → 132° → | |
| GP 3.00° | | | |
| TCH 48 | | | |
| | 2700 | *1640 | |
| | 8.6 NM | 3.2 NM | 1.9 |
| | | | *LNAV only. |

| CATEGORY | A | B | C | D |
|--------------|--------|-------------|-------------------------|-----------------------|
| LPV DA | | 1252-¾ | 250 (300-¾) | |
| LNAV/VNAV DA | | 1401-1 | 399 (400-1) | |
| LNAV MDA | 1500-½ | 498 (500-½) | 1500-¾ 498 (500-¾) | 1500-1 498 (500-1) |
| CIRCLING | 1500-1 | 498 (500-1) | 1560-1½ 558 (600-1½) | 1640-2 638 (700-2) |

SC-3, 18 JUN 2020 to 16 JUL 2020

SC-3, 18 JUN 2020 to 16 JUL 2020