

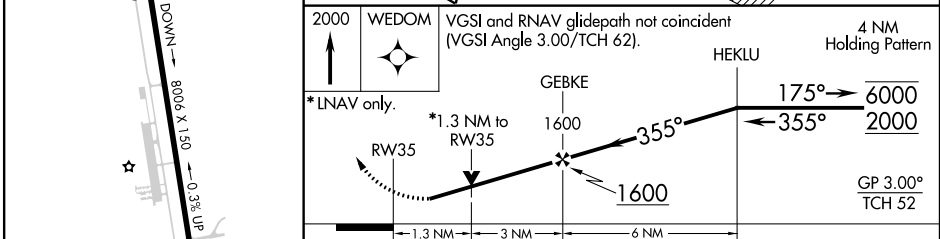
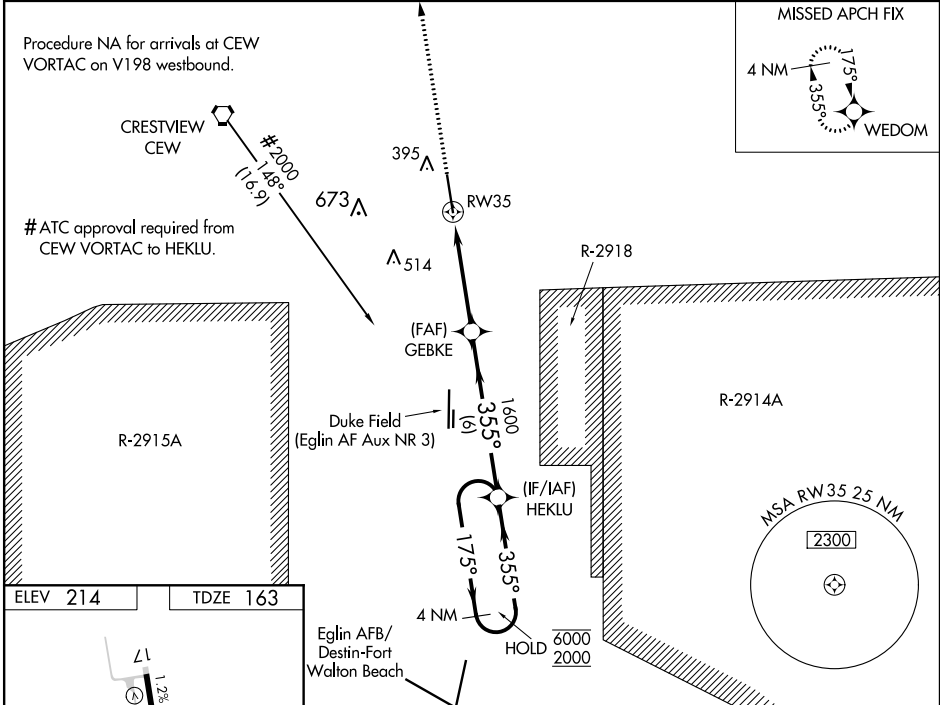
WAAS CH 40208 W35A	APP CRS 355°	Rwy Idg TDZE 163 Apt Elev 214
--	------------------------	---

RNAV (GPS) RWY 35

BOB SIKES (CEW)

RNP APCH.	<p>MISSED APPROACH: Climb to 2000 direct WEDOM and hold.</p>
<p>Baro-VNAV and VDP NA when using Eglin AFB altimeter setting. Rwy 35 helicopter visibility reduction below 3/4 SM NA. For uncompensated Baro-VNAV systems, LNAV/VNAV NA below -5°C or above 54°C. When local altimeter setting not received, use Eglin AFB altimeter setting and increase LPV DA to 509, LNAV/VNAV DA to 550, and all MDA 60 feet, increase LNAV Cat C/D visibility 1/2 SM.</p>	

ASOS 119.275	EGLIN APP CON 124.05 284.65	UNICOM 122.95 (CTAF) 0
------------------------	---------------------------------------	---



2000	WEDOM	VGSI and RNAV glidepath not coincident (VGSI Angle 3.00/TCH 62).		4 NM Holding Pattern
*LNAV only.		*1.3 NM to RWY 35		HEKLU
RWY 35		1600		175° → 6000
				← 355° 2000
		GP 3.00°		TCH 52
CATEGORY	A	B	C	D
LPV DA	450-1 287 (300-1)			
LNAV/VNAV DA	491-1 328 (300-1 1/4)			
LNAV MDA	640-1 477 (500-1)		640-1 3/8 477 (500-1 3/8)	

SE-3, 18 JUN 2020 to 16 JUL 2020

SE-3, 18 JUN 2020 to 16 JUL 2020