

VOR/DME EHK 117.3 Chan 120	APP CRS 177°	Rwy Idg TDZE Apt Elev	8650 5600 5622
--	------------------------	-----------------------------	---

VOR RWY 20

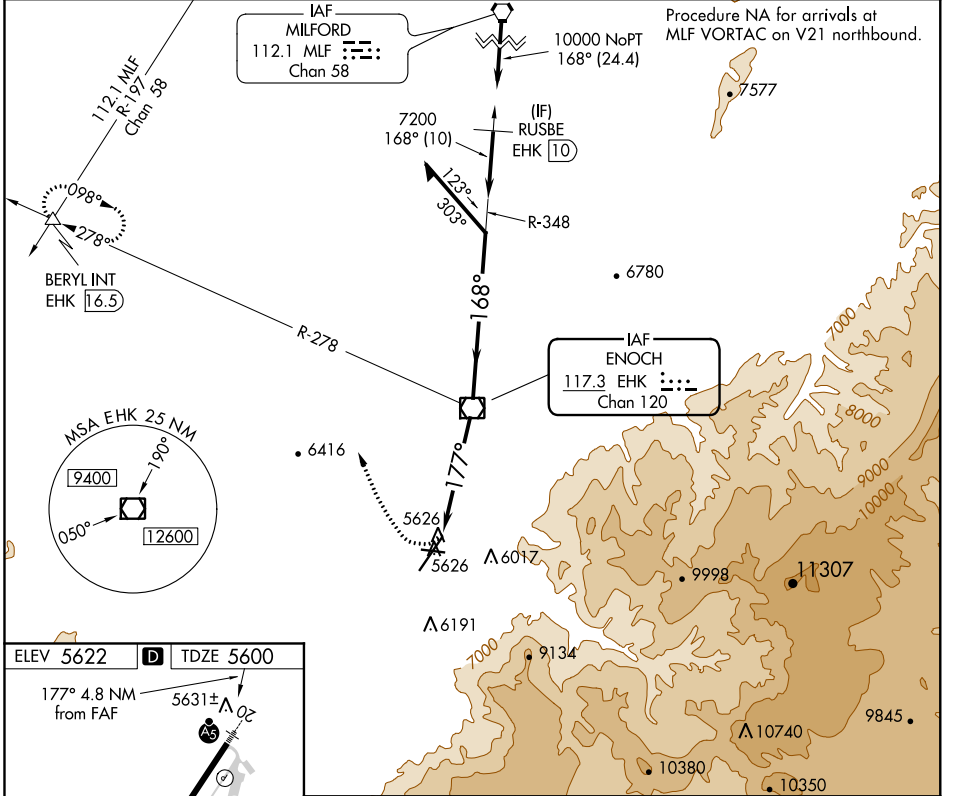
CEDAR CITY RGNL(CDC)

Inoperative table does not apply. Circling NA southeast of Rwy 2-20.

MALSR

MISSED APPROACH: Climbing right turn to 9500 on heading 322° and EHK VOR/DME R-278 to BERYL INT/EHK 16.5 DME and hold.

ASOS 119.025	SALT LAKE CITY CENTER 125.575 379.275	UNICOM 123.0 (CTAF)
------------------------	---	-------------------------------



ELEV 5622 TDZE 5600

177° 4.8 NM from FAF

5631±

4822 X 60 0.9% UP

8850 X 150 0.4% UP

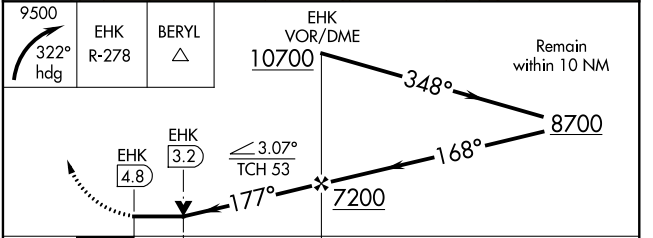
MIRL Rwy 8-26

HIRL Rwy 2-20

REIL Rwy 2

FAF to MAP 4.8 NM

Knots	60	90	120	150	180
Min:Sec	4:48	3:12	2:24	1:55	1:36



CATEGORY	A	B	C	D
S-20	6160-1 560 (600-1)		6160-1½ 560 (600-1½)	
CIRCLING	6160-1 538 (600-1)		6160-1½ 538 (600-1½)	6180-2 558 (600-2)

SW-4, 18 JUN 2020 to 16 JUL 2020

SW-4, 18 JUN 2020 to 16 JUL 2020