

WAAS CH 72640 W20A	APP CRS 200°	Rwy Idg TDZE Apt Elev	8650 5600 5622
--	------------------------	-----------------------------	---

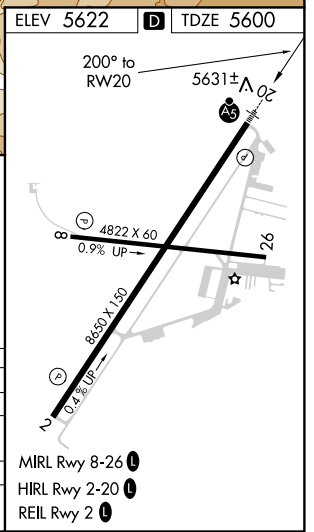
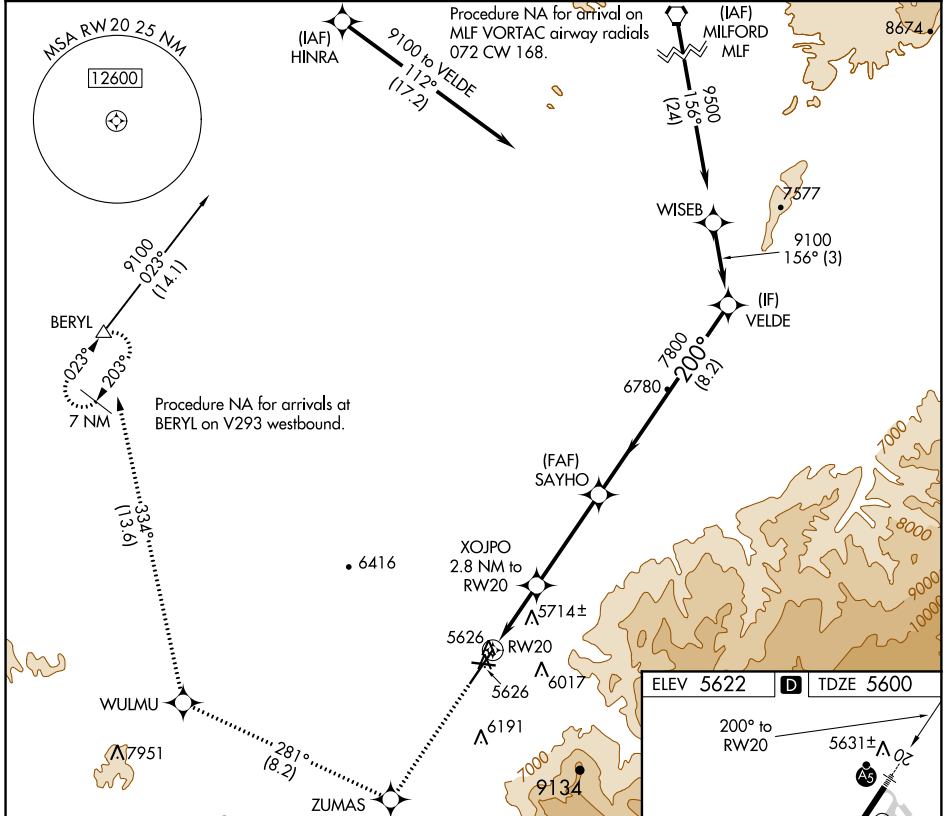
RNAV (GPS) RWY 20

CEDAR CITY RGNL (CDC)

For uncompensated Baro-VNAV systems, LNAV/VNAV NA below -21°C (-5°F) or above 48°C (119°F). Circling NA southeast of Rwy 2-20. DME/DME RNP -0.3 NA. For inop ALS, increase LNAV Cats C/D visibility to 1 1/2 SM.

MALSR MISSED APPROACH: Climb to 9800 direct ZUMAS and on track 281° to WULMU and on track 334° to BERYL and hold.

ASOS 119.025	SALT LAKE CITY CENTER 125.575 379.275	UNICOM 123.0 (CTAF) 0
------------------------	---	---------------------------------



9800	ZUMAS	tr 281°	WULMU	tr 334°	BERYL	VGSI and RNAV glidepath not coincident. (VGSI Angle 3.00/TCH 53).
*LNAV only						VELDE
*1.7 NM to RWY 20						GP 3.00° TCH 47
RWY 20						
CATEGORY						
LPV DA						5820-1/2 220 (200-1/2)
LNAV/VNAV DA						5978-3/4 378 (400-3/4)
LNAV MDA						6180-1/2 580 (600-1/2) 6180-1 580 (600-1 1/4)
CIRCLING						6180-1 558 (600-1) 6180-2 558 (600-2)

SW-4, 18 JUN 2020 to 16 JUL 2020

SW-4, 18 JUN 2020 to 16 JUL 2020