

ILS or LOC RWY 5

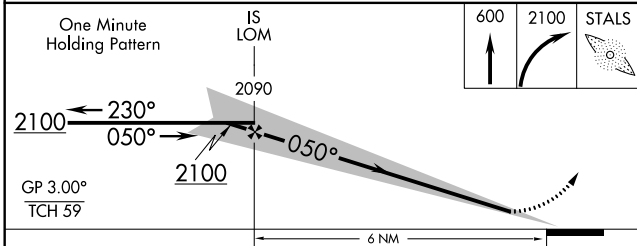
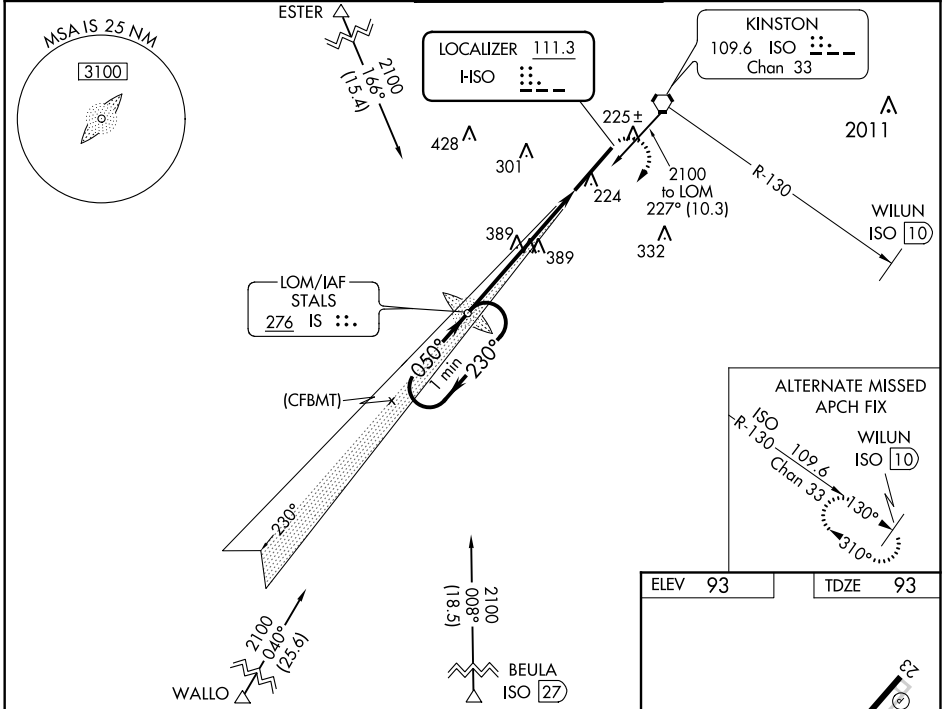
KINSTON RGNL JETPORT AT STALLINGS FIELD (ISO)

LOC I-ISO 111.3	APP CRS 050°	Rwy Idg 10960
		TDZE 93
		Apt Elev 93

ADF Required. When local altimeter setting not received, use Seymour Johnson AFB altimeter setting and increase DA to 336; increase all MDA 60 feet and S-LOC 5 Cats C and D visibility 1/8 mile and Circling Cat D visibility 1/4 mile. For inop MALS, increase S-LOC 5 Cats C and D visibility to 1 1/8 mile. For inop MALS when using Seymour Johnson AFB altimeter setting, increase S-LOC 5 Cats C and D visibility to 1 3/4 mile.
**** RVR 1800 authorized with use of FD or AP or HUD to DA, NA when using Seymour Johnson AFB altimeter setting.**

MALS
 MISSED APPROACH:
 Climb to 600 then climbing right turn to 2100 direct STALS LOM and hold.

AWOS-3 132.75	SEYMOUR JOHNSON APP CON * 127.3 273.6	KINSTON TOWER * 120.6 (CTAF) 0 335.55	GND CON 121.9	UNICOM 122.95
-------------------------	---	---	-------------------------	-------------------------



ELEV 93	TDZE 93
---------	---------

REIL Rwy 23
 HIRL Rwy 5-23

Knots	60	90	120	150	180
Min:Sec	6:00	4:00	3:00	2:24	2:00

ILS or LOC RWY 5

SE-2, 18 JUN 2020 to 16 JUL 2020

SE-2, 18 JUN 2020 to 16 JUL 2020