

WAAS CH <b>40005</b> <b>W32A</b>	APP CRS <b>320°</b>	Rwy Idg <b>3576</b> TDZE <b>671</b> Apt Elev <b>672</b>
--	------------------------	---

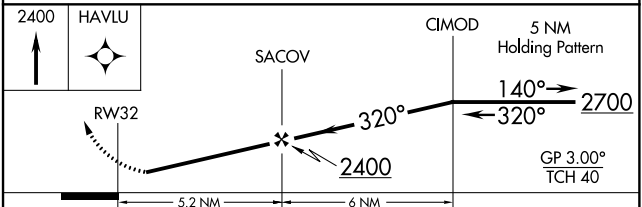
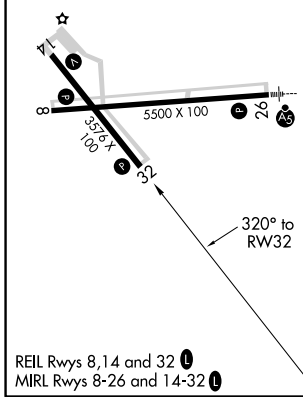
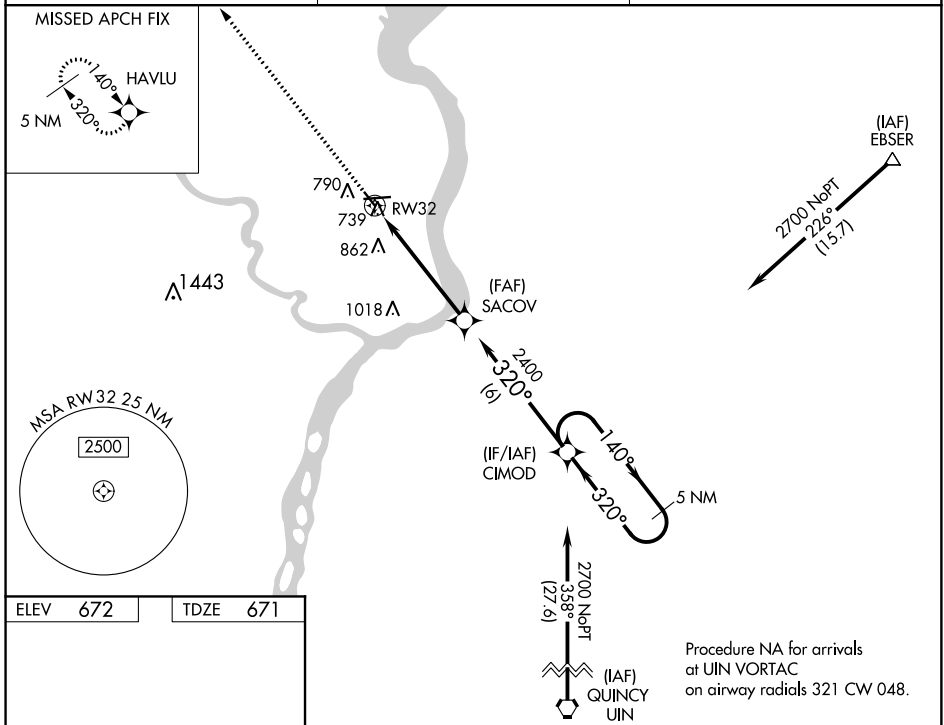
# RNAV (GPS) RWY 32

KEOKUK MUNI (EOK)

**⚠** DME/DME RNP -0.3 NA. Helicopter visibility reduction below 1 SM not authorized.  
**⚠** For uncompensated Baro-VNAV systems, LNAV/VNAV NA below -16°C (4°F) or above 54°C (130°F). When local altimeter setting not received, use Burlington altimeter setting and increase all DA 59 feet and all MDA 60 feet, increase LNAV/VNAV Cat A/B/C and LNAV and Circling Cat C visibility ¼ mile. Baro-VNAV NA when using Burlington altimeter setting. Rwy 32 Straight-in and Circling minimums NA at night.

MISSED APPROACH: Climb to 2400 direct HAVLU and hold.

AWOS-3 <b>118.375</b>	KANSAS CITY CENTER <b>126.225 317.775</b>	UNICOM <b>122.8 (CTAF) 0</b>
--------------------------	--	---------------------------------



CATEGORY	A	B	C	D
LPV DA	921-1	250 (300-1)		NA
LNAV/VNAV DA	1163-1¾	492 (500-1¾)		NA
LNAV MDA	1120-1	449 (500-1)	1120-1¼ 449 (500-1¼)	NA
CIRCLING	1180-1	508 (600-1)	1220-1½ 548 (600-1½)	NA

NC-3, 18 JUN 2020 to 16 JUL 2020

NC-3, 18 JUN 2020 to 16 JUL 2020