

WAAS CH 90104 W14A	APP CRS 140°	Rwy Idg 3576 TDZE 671 Apt Elev 672
--	------------------------	---

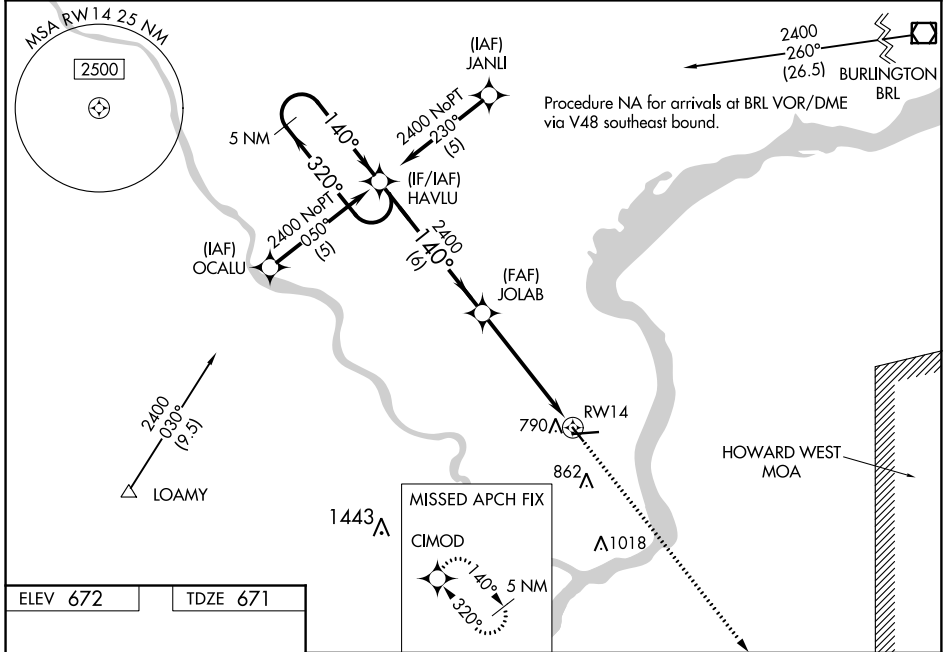
RNAV (GPS) RWY 14

KEOKUK MUNI (EOK)

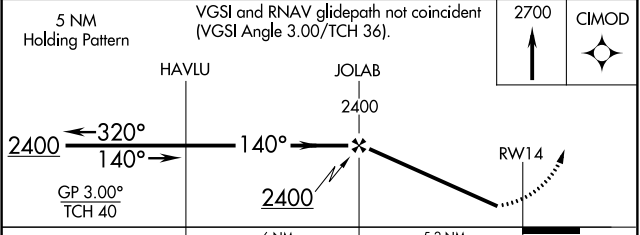
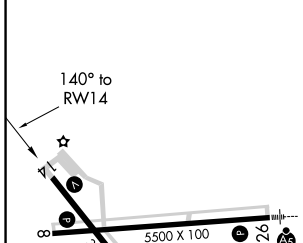
⚠ Baro-VNAV NA when using Burlington altimeter setting. For uncompensated Baro-VNAV systems, LNAV/VNAV NA below -16°C (4°F) or above 54°C (130°F). DME/DME RNP -0.3 NA. Helicopter visibility reduction below 1 SM NA. When local altimeter setting not received, use Burlington altimeter setting and increase all DA 59 feet and all MDA 60 feet, increase LNAV and Circling Cat C visibility ¼ mile. Rwy 14 Straight-in and Circling and Circling to Rwy 32 NA at night.

⚠ MISSED APPROACH: Climb to 2700 direct CIMOD and hold.

AWOS-3 118.375	KANSAS CITY CENTER 126.225 317.775	UNICOM 122.8 (CTAF) 0
--------------------------	--	---------------------------------



ELEV 672	TDZE 671
----------	----------



CATEGORY	A	B	C	D
LPV DA	949-1	278 (300-1)		NA
LNAV/VNAV DA	1040-1¼	369 (400-1¼)		NA
LNAV MDA	1040-1	369 (400-1)		NA
CIRCLING	1180-1	508 (600-1)	1220-1½ 548 (600-1½)	NA

NC-3, 18 JUN 2020 to 16 JUL 2020

NC-3, 18 JUN 2020 to 16 JUL 2020