

LOC/DME I-BBJ 110.9 Chan 46	APP CRS 264°	Rwy Idg TDZE Apt Elev	5500 671 672
--	------------------------	-----------------------------	---

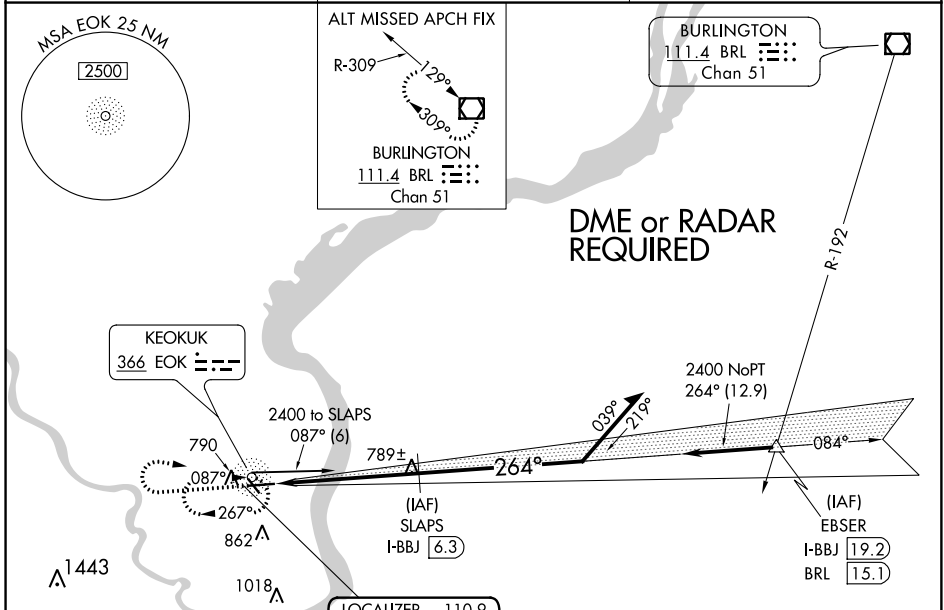
ILS or LOC/DME RWY 26

KEOKUK MUNI (EOK)

⚠ ADF required. VDP NA when using Burlington altimeter setting. When VGSi inop, Circling rwy 32 NA at night. When local altimeter setting not received, use Burlington altimeter setting and increase DA to 930 feet and all MDA 60 feet. Increase S-LOC 26 and Circling Cat C visibility ¼ SM. Circling to Rwy 32 NA at night. For inop MALSR when using Burlington altimeter setting, increase S-ILS 26 Cats A/B/C visibility to 1 mile.

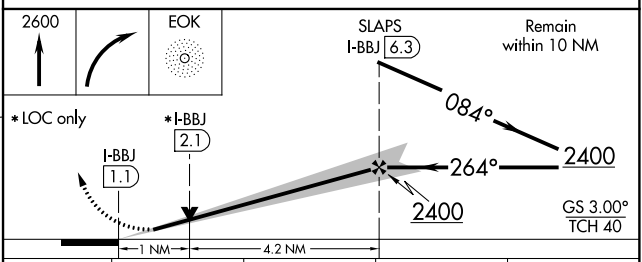
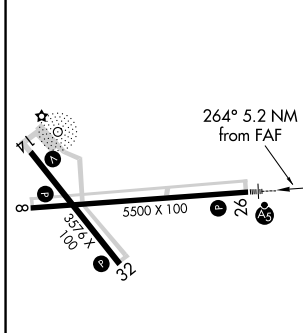
MALSR MISSED APPROACH: Climb to 2600 then right turn direct EOK NDB and hold.

AWOS-3 118.375	KANSAS CITY CENTER 126.225 317.775	UNICOM 122.8 (CTAF)
--------------------------	--	-------------------------------



ELEV 672	TDZE 671
----------	----------

LOCALIZER 110.9
I-BBJ Chan 46



CATEGORY	A	B	C	D
S-ILS 26	871-½	200 (200-½)		NA
S-LOC 26	1040-½	369 (400-½)		NA
CIRCLING	1180-1	508 (600-1)	1220-1½ 548 (600-1½)	NA

KEOKUK, IOWA
Orig-D 14SEP17

NC-3, 18 JUN 2020 to 16 JUL 2020

NC-3, 18 JUN 2020 to 16 JUL 2020