

WAAS CH <b>58320</b> <b>W32A</b>	APP CRS <b>319°</b>	Rwy Idg TDZE Apt Elev	<b>4401</b> <b>1312</b> <b>1324</b>
--	------------------------	-----------------------------	---

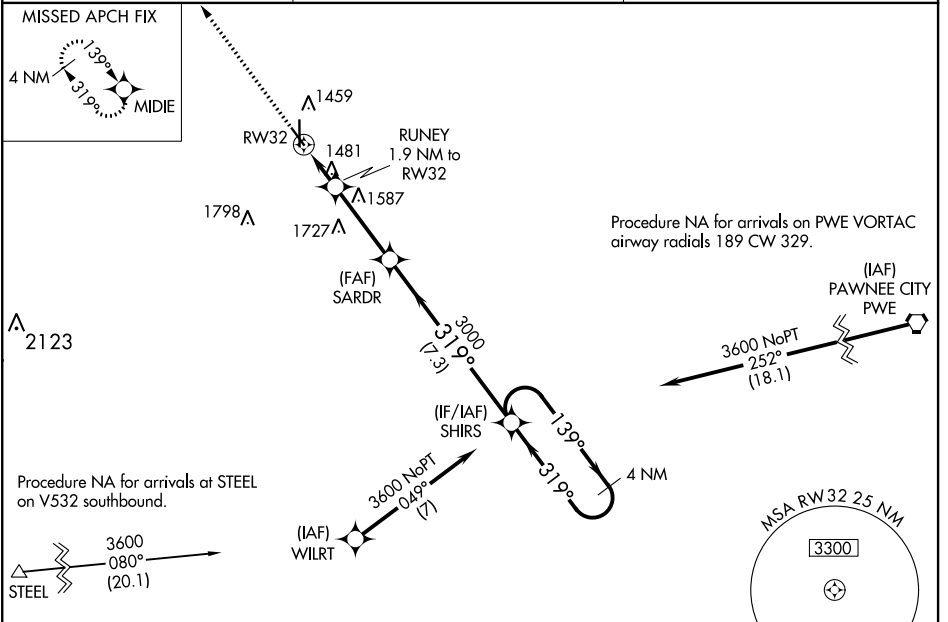
# RNAV (GPS) RWY 32

BEATRICE MUNI (BIE)

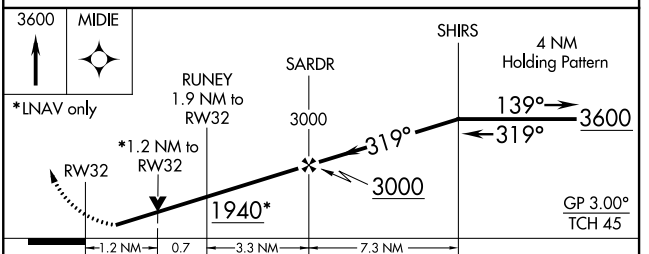
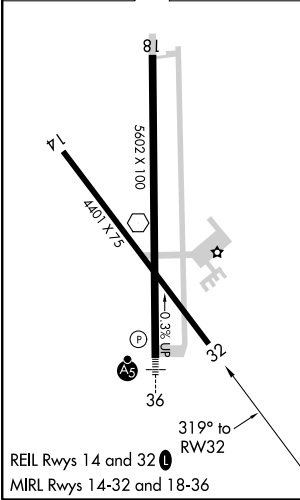
**⚠** For uncompensated Baro-VNAV systems, LNAV/VNAV NA below -22°C (-7°F) or above 54°C (130°F).  
**⚠** DME/DME RNP-0.3 NA.  
 Rwy 32 helicopter visibility reduction below ¾ SM NA.

MISSED APPROACH: Climb to 3600 direct MIDIE and hold.

AWOS-3 <b>125.325</b>	MINNEAPOLIS CENTER <b>126.4 317.7</b>	UNICOM <b>122.8 (CTAF)</b>
--------------------------	--	-------------------------------



ELEV 1324	<b>D</b>	TDZE 1312
-----------	----------	-----------



CATEGORY	A	B	C	D
LPV DA		1562-1	250 (300-1)	
LNAV/VNAV DA		1685-1½	373 (400-1½)	
LNAV MDA	1740-1	428 (500-1)	1740-1½	428 (500-1½)
<b>C</b> CIRCLING	1820-1	496 (500-1)	2000-2 676 (700-2)	2100-2½ 776 (800-2½)

NC-2, 18 JUN 2020 to 16 JUL 2020

NC-2, 18 JUN 2020 to 16 JUL 2020