

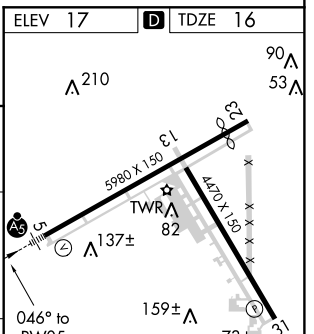
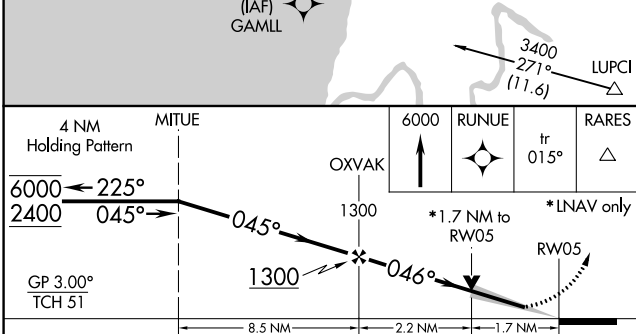
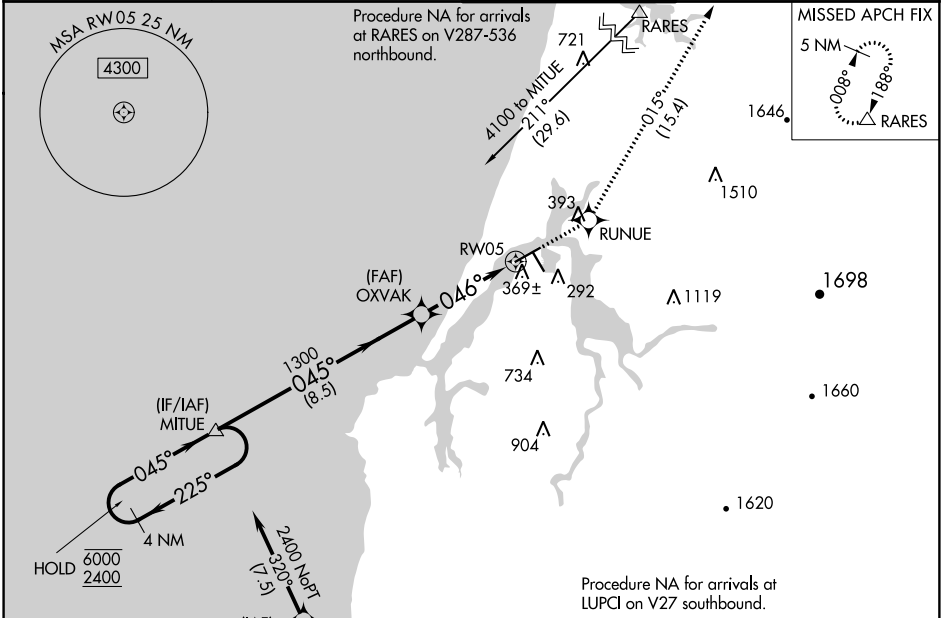
WAAS CH 82416	APP CRS 046°	Rwy Idg TDZE Apt Elev	5320 16 17
-------------------------	------------------------	-----------------------------	---------------------------------------

RNAV (GPS) Y RWY 5

SOUTHWEST OREGON RGNL (OTH)

RNP APCH		MALSRL	MISSED APPROACH: Climb to 6000 direct RUNUE and on track 015° to RARES and hold, continue climb-in-hold to 6000.
<p>▼ Circling Rwy 13, 31 NA at night. For uncompensated Baro-VNAV systems, LNAV/VNAV NA below -2°C or above 54°C. For inop ALS, increase LPV all Cats visibility to ½ SM, LNAV/VNAV all Cats visibility to 1½ SM, and increase LNAV Cat C/D visibility to 1¾ SM.</p>			

AWOS-3PT 135.075	SEATTLE CENTER 127.55 254.35	NORTH BEND TOWER* 118.45 (CTAF) 0	GND CON 127.1
----------------------------	--	---	-------------------------



4 NM Holding Pattern	MITUE	OXVAK	RUNUE	RARES
6000 ← 225°	045° →	1300	*1.7 NM to RWY 5	*LNAV only
GP 3.00° TCH 51	1300	046°	RWY 5	
	8.5 NM	2.2 NM	1.7 NM	
CATEGORY	A	B	C	D
LPV DA		319-½	303 (400-½)	
LNAV/VNAV DA		550-1¾	534 (600-1¾)	
LNAV MDA	620-½	604 (700-½)	620-1¾	604 (700-1¾)
Ⓢ CIRCLING	680-1 663 (700-1)	820-1 803 (900-1)	1100-3 1083 (1100-3)	1160-3 1143 (1200-3)

ELEV 17	TDZE 16
HIRL Rwy 5-23 MIRL Rwy 13-31 REIL Rwys 13, 23 and 31	

NW-1, 18 JUN 2020 to 16 JUL 2020

NW-1, 18 JUN 2020 to 16 JUL 2020