

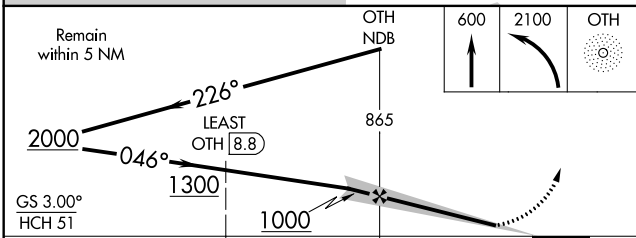
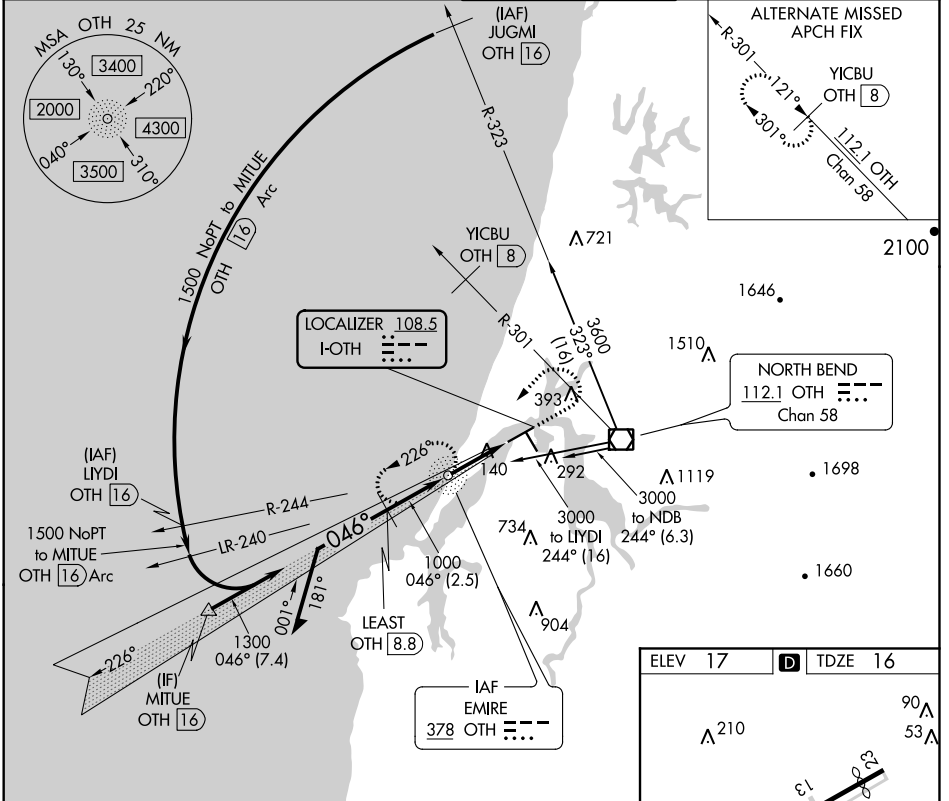
LOC I-OTH 108.5	APP CRS 046°	Rwy Idg 5320
		TDZE 16
		Apt Elev 17

COPTER ILS or LOC RWY 5

SOUTHWEST OREGON RGNL (OTH)

ADF and DME required.	MALS R	MISSED APPROACH: Climb to 600 then climbing left turn to 2100 direct OTH NDB and hold, continue climb-in-hold to 2100.
-----------------------	--------	--

AWOS-3PT 135.075	SEATTLE CENTER 127.55 254.35	NORTH BEND TOWER* 118.45 (CTAF) 0	GND CON 127.1
----------------------------	--	---	-------------------------



ELEV 17	TDZE 16
90° 53° 137± 159± 73± 319± HIRL Rwy 5-23 MIRL Rwy 13-31 REIL Rwys 13, 23 and 31	
FAF to MAP 2.5 NM	
Knots	45 60 75 90 105
Min:Sec	3:20 2:30 2:00 1:40 1:26

CATEGORY	COPTER	
H-ILS 5	216-½	200 (200-½)
H-LOC 5	400-½	384 (400-½)

NW-1, 18 JUN 2020 to 16 JUL 2020

NW-1, 18 JUN 2020 to 16 JUL 2020