

# RNAV (GPS) RWY 10

CHIPPEWA COUNTY INTL (CIU)

APP CRS <b>097°</b>	Rwy Idg <b>5000</b>
	TDZE <b>799</b>
	Apt Elev <b>799</b>

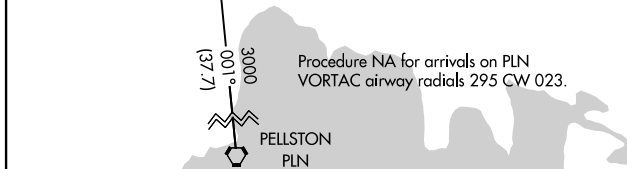
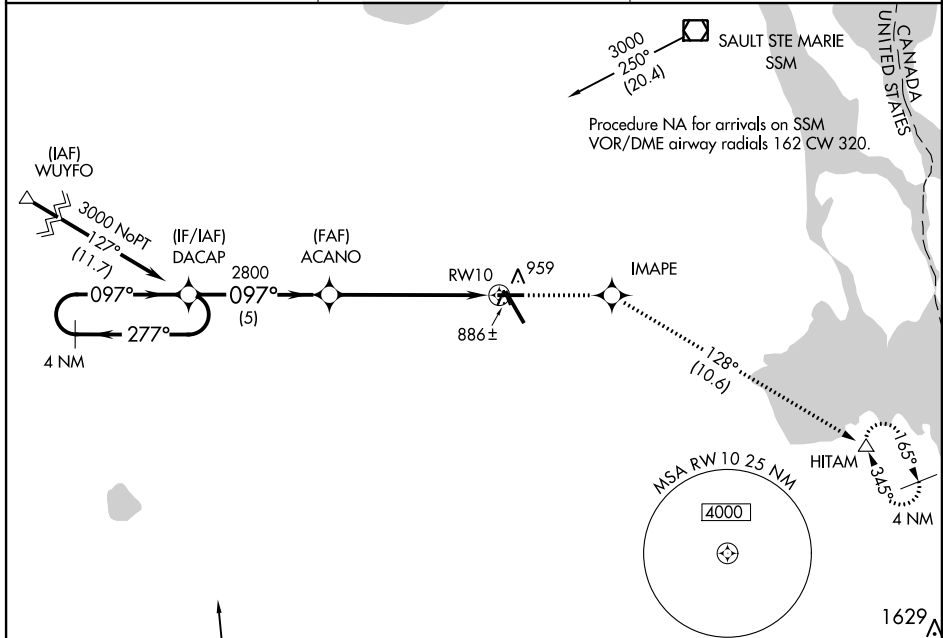
**⚠** DME/DME RNP-0.3 NA, VDP NA with Sault Ste Marie altimeter setting. When local altimeter setting not received, use Sault Ste Marie Muni/Sanderson Field altimeter setting and increase all MDA 60 feet, increase LNAV visibility Cat C/D and Circling Cat C ¼ mile.

**⚠** MISSED APPROACH: Climb to 2900 direct IMAPE and track 128° to HITAM and hold.

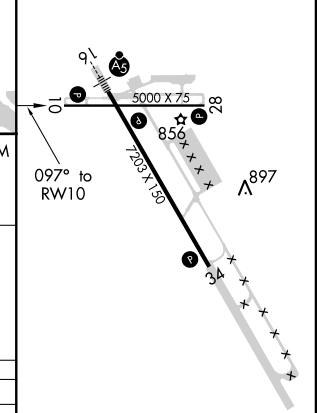
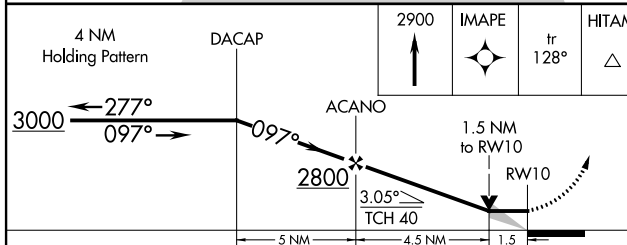
AWOS-3PT  
**127.575**

TORONTO CENTER  
**132.65 344.5**

UNICOM  
**123.0 (CTAF)**



ELEV 799 **D** TDZE 799



CATEGORY	A	B	C	D
LNAV MDA	1320-1	521 (600-1)	1320-1½	521 (600-1½)
CIRCLING	1320-1	521 (600-1)	1320-1½	1360 - 2 561 (600-2)

REIL Rwy 10, 28 and 34 **L**  
MIRL Rwy 10-28 **L**  
HIRL Rwy 16-34 **L**

EC-1, 18 JUN 2020 to 16 JUL 2020

EC-1, 18 JUN 2020 to 16 JUL 2020