

APCH CRS	Rwy Idg	12,001
325°	THRE	105
	Arpt Elev	113

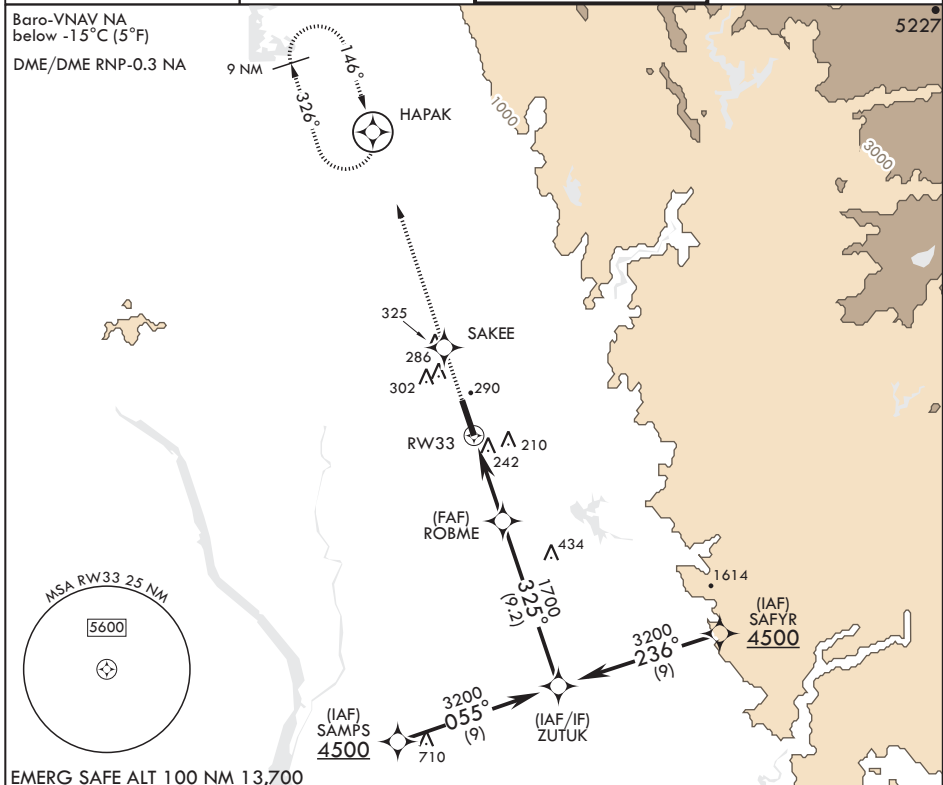
AL-771 (USAF)

BEALE AFB (KBAB)

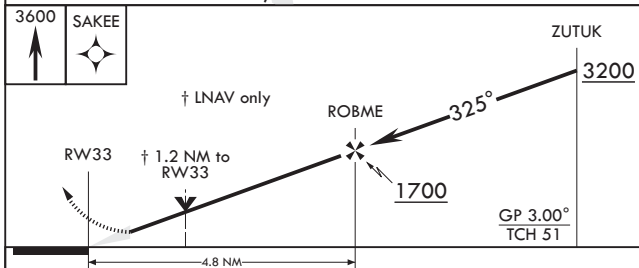
V * When ALS inop, increase all CAT's vis to 1 7/8 miles.
 ** When ALS inop, increase CAT AB RVR to 55 and vis to 1 mile, CAT CD vis to 1 1/4 miles.
 *** Circling not authorized E of Rwy 15-33.

ALSF-1 MISSED APPROACH: Climb direct SAKEE, then track 326° to HAPAK and hold, maintain 3600.

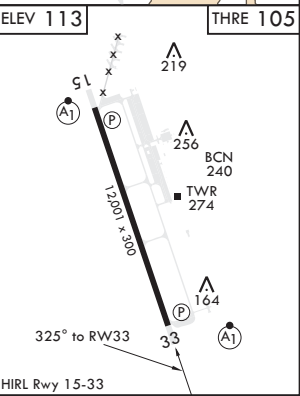
ATIS*	NORCAL APP CON	TOWER*	GND CON
124.55 273.5	125.4 259.1	119.4 284.75	121.6 257.75



EMERG SAFE ALT 100 NM 13,700



CATEGORY	A	B	C	D
LNAV/VNAV DA*	640-1 3/8		535	(600-1 3/8)
LNAV MDA**	540/24	435 (500-1/2)	540/40	435 (500-3/4)
C CIRCLING***	600-1 487 (500-1)	640-1 527 (600-1)	660-1 1/2 547 (600-1 1/2)	680-2 567 (600-2)



SW-2, 18 JUN 2020 to 16 JUL 2020

SW-2, 18 JUN 2020 to 16 JUL 2020