

MARYSVILLE, CALIFORNIA

# RNAV (GPS) RWY 15

APCH CRS	Rwy Idg	12,001
145°	THRE	113
	Arprt Elev	113

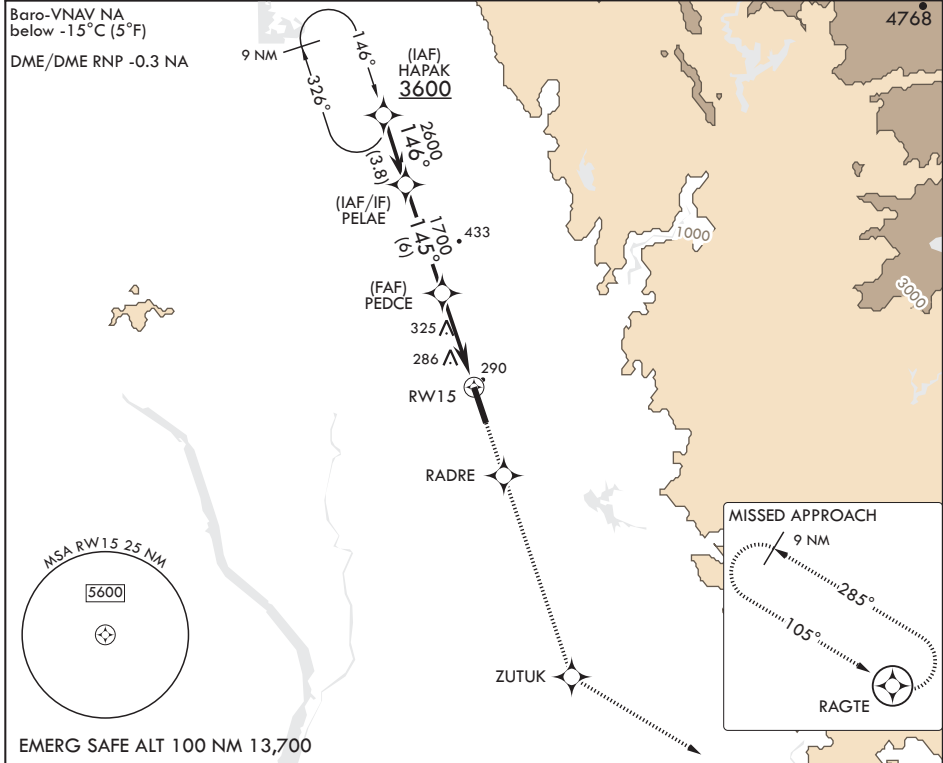
AL-771 (USAF)

BEALE AFB (KBAB)

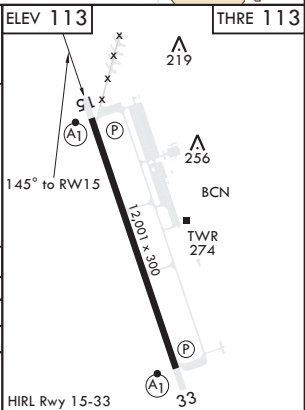
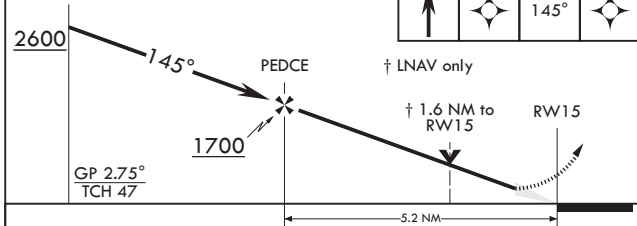
**V** \* When ALS inop, increase vis to 2 1/2 miles.  
 \*\* When ALS inop, increase CAT AB RVR to 55 and vis to 1 mile, CAT CDE vis to 1 3/8 miles.  
 \*\*\* Circling not authorized E of Rwy 15-33.

**ALS-F1** MISSED APPROACH: Climb direct RADRE, then track 145° to ZUTUK, then turn left and track 105° to RAGTE and hold, maintain 3600.

ATIS*	NORCAL APP CON	TOWER*	GND CON
124.55 273.5	125.4 259.1	119.4 284.75	121.6 257.75



EMERG SAFE ALT 100 NM 13,700



CATEGORY	A	B	C	D	E
LNAV/VNAV DA*	680-1 5/8		567	(600-1 5/8)	
LNAV MDA**	620/24 507 (600-1/2)		620/55	507	(600-1)
<b>C</b> CIRCLING***	620-1 507 (600-1)	640-1 527 (600-1)	660-1 1/2 547 (600-1 1/2)	680-2 567 (600-2)	840-2 1/2 727 (800-2 1/2)

MARYSVILLE, CALIFORNIA

39°08'N - 121°26'W

BEALE AFB (KBAB)

Amdt 1 20JUL17

# RNAV (GPS) RWY 15

SW-2, 18 JUN 2020 to 16 JUL 2020

SW-2, 18 JUN 2020 to 16 JUL 2020