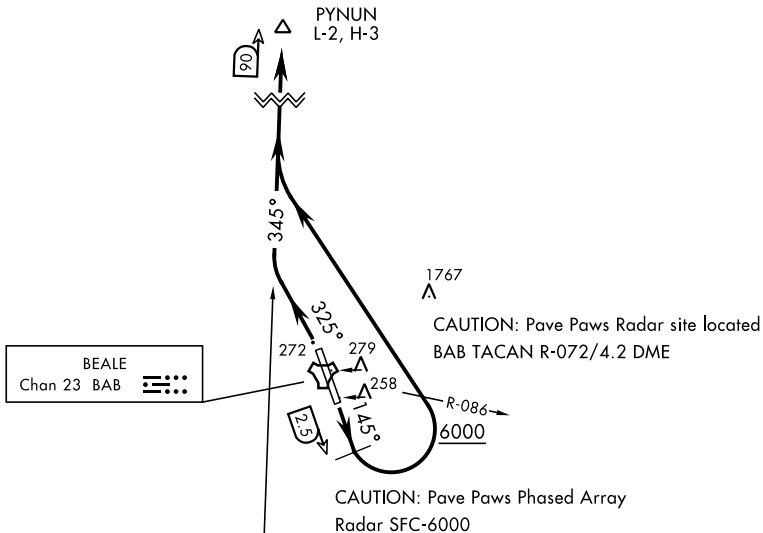


ATIS ★
124.55 273.5
GND CON
121.6 257.75
BEALE TOWER ★
119.4 284.75
NORCAL DEP CON
125.4 259.1

SHL-771 [USAF]

PYNUN
L-2, H-3



BEALE
Chan 23 BAB

SACRAMENTO
115.2 SAC
Chan 99

FOR USE BY
9 RW AIRCRAFT ONLY

Ⓒ to 3400

Ⓓ to 6000 * Minimum Climb Rate † ATC Climb Rate

Rwy	Knots	60	120	180	240	300	360
*15 Ⓒ	V/V(fpm)	227	454	681	908	1135	1362
†15 Ⓓ	V/V(fpm)	534	1068	1602	2136	2670	3204

DEPARTURE ROUTE DESCRIPTION

TAKE-OFF RWY 15: Fly heading 145° until BAB TACAN 2.5 DME, turn left intercept SAC VORTAC R-345 to PYNUN. Cross BAB R-086 at or above 6000. Then via assigned route.

TAKE-OFF RWY 33: Fly heading 325° intercept SAC VORTAC R-345 to PYNUN. Then via assigned route.