

# SWVAY FOUR ARRIVAL (RNAV)

DALLAS, TEXAS

0200 10r 01 0200 2000 18 18 18 18 2-C-C

ADDITION ATIS  
133.4  
DALLAS EXECUTIVE ATIS  
126.35  
DALLAS LOVE FIELD ATIS  
120.15  
REGIONAL APP CON  
135.975 379.9

NOTE: RADAR required.

NOTE: RNAV 1.

NOTE: DME/DME/IRU or GPS required.

NOTE: DAL ARRIVALS: Props only. Turboprop aircraft file and expect the BACHR or DRYYE RNAV STARS.

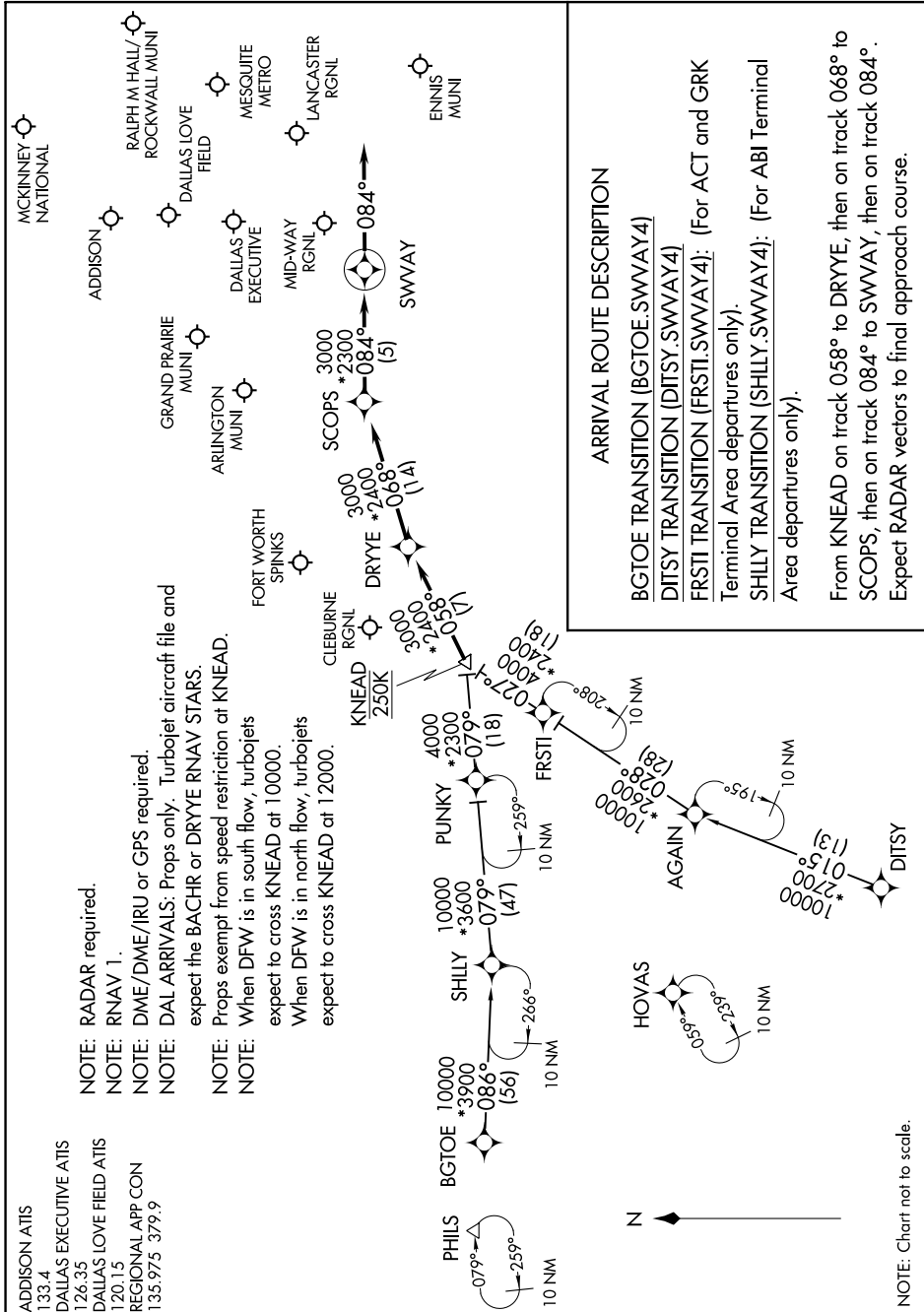
NOTE: Props exempt from speed restriction at KNEAD.

NOTE: When DFW is in south flow, turboprops expect to cross KNEAD at 10000.

NOTE: When DFW is in north flow, turboprops expect to cross KNEAD at 12000.

NOTE: When DFW is in south flow, turboprops expect to cross KNEAD at 10000.

NOTE: When DFW is in north flow, turboprops expect to cross KNEAD at 12000.



# SWVAY FOUR ARRIVAL (RNAV)

(KNEAD.SWVAY4) 26MAY16

DALLAS, TEXAS

SC-2, 18 JUN 2020 to 16 JUL 2020