

WAAS CH <b>82202</b> <b>W15A</b>	APP CRS <b>155°</b>	Rwy ldg <b>6224</b> TDZE <b>643</b> Apt Elev <b>645</b>
--	------------------------	---

# RNAV (GPS) RWY 15

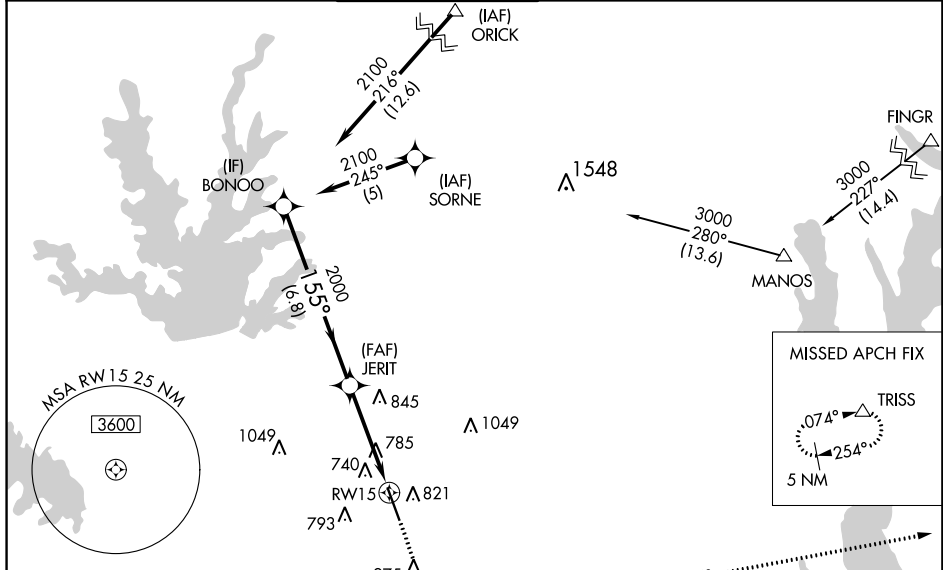
ADDISON (ADS)

▼ When local altimeter setting not received, use Dallas-Love Field altimeter setting and increase all DA 39 feet and MDA 40 feet, increase LNAV/VNAV all Cats visibility and Circling Cat C visibility 1/4 SM. Inoperative table does not apply to LPV all Cats and LNAV Cats A/B. Baro-VNAV NA when using Dallas Love Field altimeter setting. For uncompensated Baro-VNAV systems, LNAV/VNAV NA below -16°C (4°F) or above 47°C (117°F). DME/DME RNP-0.3 NA. Helicopter visibility reduction below 1 SM NA. For inoperative MALSR increase LNAV Cat C visibility to 1/4.

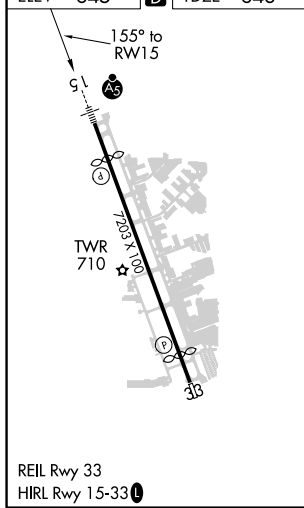
MALSR

MISSED APPROACH:  
Climb to 3000 direct VEYXE and via 074° track to TRISS and hold.

ATIS <b>133.4</b>	REGIONAL APP CON <b>124.3 282.275</b>	ADDISON TOWER ★ <b>126.0 (CTAF) 239.0</b>	GND CON <b>121.6</b>	CLNC DEL <b>119.55</b>	UNICOM <b>122.95</b>
----------------------	--	--	-------------------------	---------------------------	-------------------------



ELEV <b>645</b>	<b>D</b>	TDZE <b>643</b>
-----------------	----------	-----------------



Procedure Turn NA	BONOO	3000	VEYXE	TRISS
2100	155°	JERIT	tr 074°	△
VGSI and RNAV glidepath not coincident (VGSI Angle 3.00/TCH 60).				
GP 3.00° TCH 52				
6.8 NM		4.1 NM		
CATEGORY	A	B	C	D
LPV DA	943-1 300 (300-1)			
LNAV/VNAV DA	1076-1 433 (500-1)			
LNAV MDA	1100-1 457 (500-1)			
<b>C</b> CIRCLING	1200-1 555 (600-1)		1280-1 635 (700-1 3/4)	1400-2 755 (800-2 1/2)

SC-2, 18 JUN 2020 to 16 JUL 2020

SC-2, 18 JUN 2020 to 16 JUL 2020