

LOC/DME I-ADS 110.1 Chan 38	APP CRS 155°	Rwy Idg 6224 TDZE 643 Apt Elev 645
---	------------------------	---

ILS or LOC RWY 15

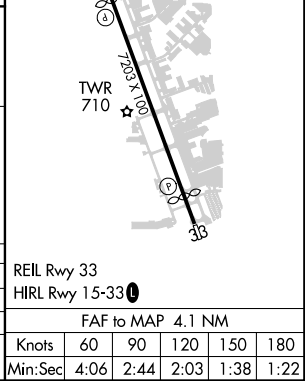
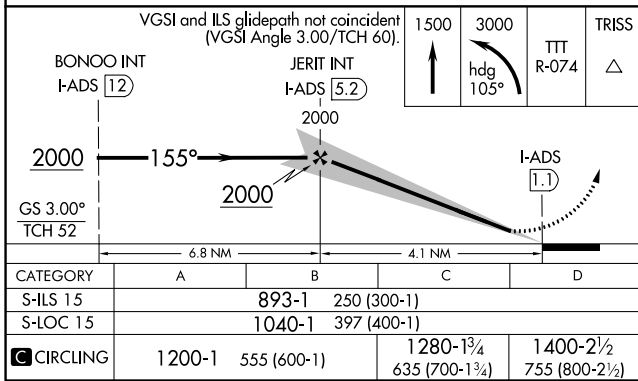
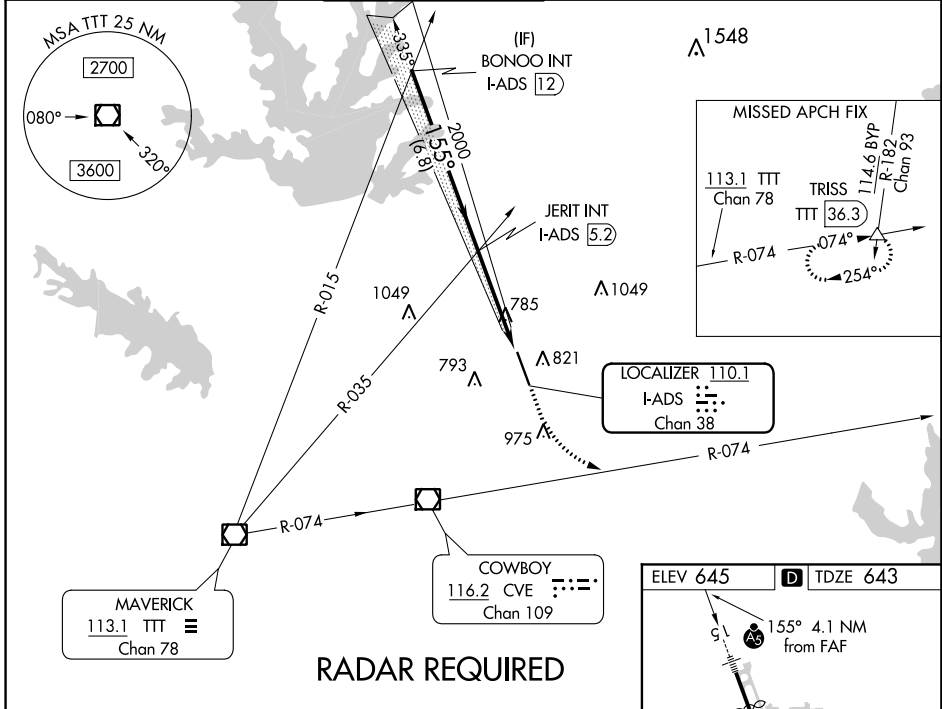
ADDISON (ADS)

▼ When local altimeter setting not received, use Dallas-Love Field altimeter setting and increase all DA 39 feet and all MDA 40 feet, increase Circling Cat C visibility ¼ SM. Inoperative table does not apply to S-ILS 15 all Cats, S-LOC 15 Cats A, B & C. For inoperative MALSR, increase S-LOC 15 Cat D visibility to 1¼. Helicopter visibility reduction below 1 SM NA. For inop MALSR when using Dallas-Love Field altimeter setting increase S-LOC Cat C visibility to 1¼ and Cat D visibility to 1½.

▲ MALSR

MISSED APPROACH: Climb to 1500 then climbing left turn to 3000 via heading 105° and TTT VOR/DME R-074 to TRISS Int/TTT 36.3 DME and hold.

ATIS 133.4	REGIONAL APP CON 124.3 282.275	ADDISON TOWER* 126.0 (CTAF) 239.0	GND CON 121.6	CLNC DEL 119.55	UNICOM 122.95
----------------------	--	---	-------------------------	---------------------------	-------------------------



DALLAS, TEXAS Amdt 11B 23APR20	32°58'N-96°50'W	ADDISON (ADS) ILS or LOC RWY 15
-----------------------------------	-----------------	------------------------------------

SC-2, 18 JUN 2020 to 16 JUL 2020

SC-2, 18 JUN 2020 to 16 JUL 2020