

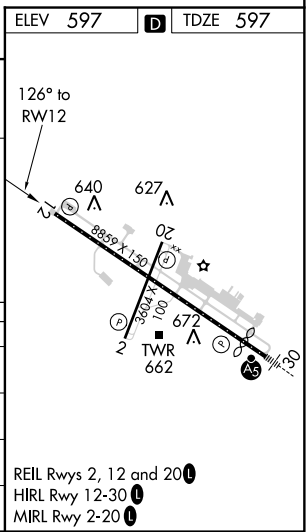
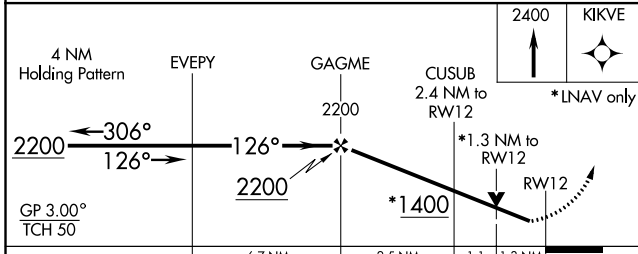
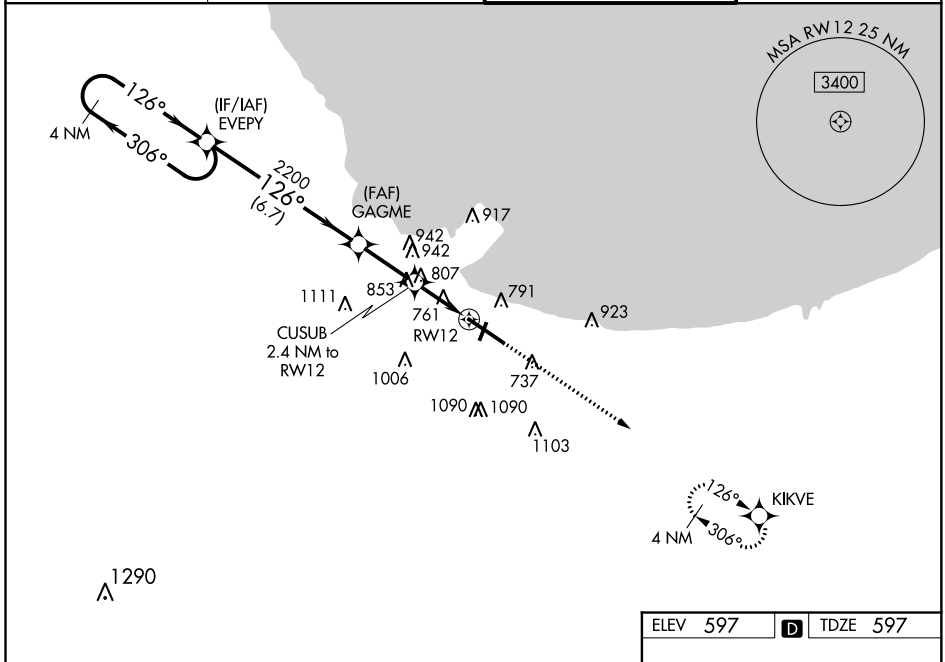
WAAS CH <b>70623</b> <b>W12A</b>	APP CRS <b>126°</b>	Rwy Idg TDZE Apt Elev	<b>7959</b> <b>597</b> <b>597</b>
--	------------------------	-----------------------------	---

# RNAV (GPS) Y RWY 12

GARY/CHICAGO INTL (GYY)

<p>▼ ▲</p>	<p>For uncompensated Baro-VNAV systems, LNAV/VNAV NA below -16°C (4°F) or above 54°C (130°F). DME/DME RNP-0.3 NA. Rwy 12 helicopter visibility reduction below 3/4 SM NA.</p>	<p>MISSED APPROACH: Climb to 2400 direct KIKVE and hold.</p>
----------------	---	--

<p>ATIS <b>134.575</b></p>	<p>CHICAGO APP CON <b>133.1 285.6</b></p>	<p>GARY TOWER * <b>125.6 (CTAF) 0</b></p>	<p>GND CON <b>121.9</b></p>
--------------------------------	---	---	---------------------------------



EC-2, 18 JUN 2020 to 16 JUL 2020

EC-2, 18 JUN 2020 to 16 JUL 2020