

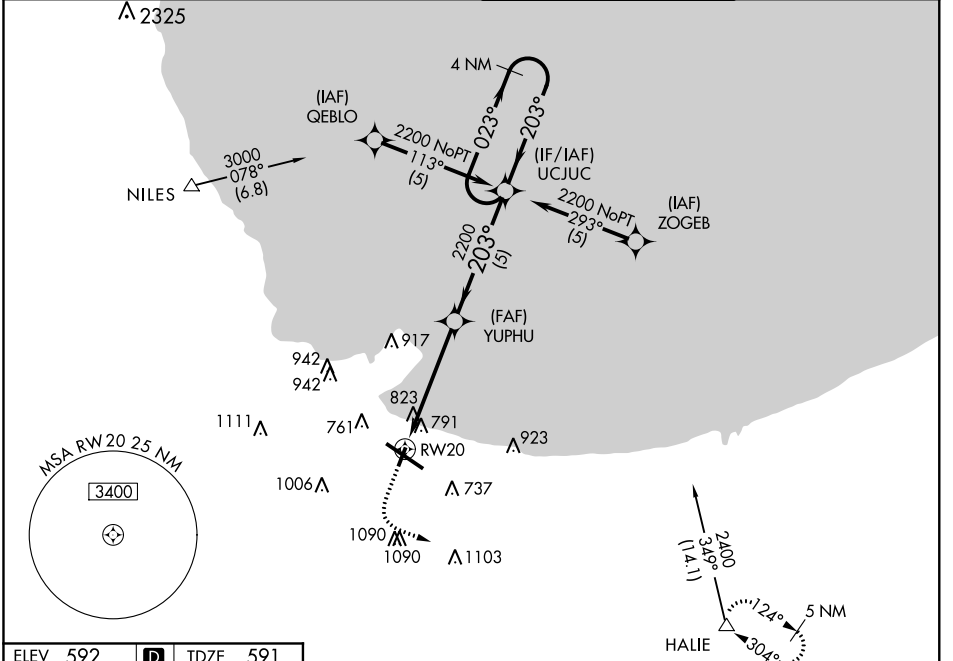
APP CRS <b>203°</b>	Rwy Idg <b>3604</b>
	TDZE <b>591</b>
	Apt Elev <b>592</b>

# RNAV (GPS) RWY 20

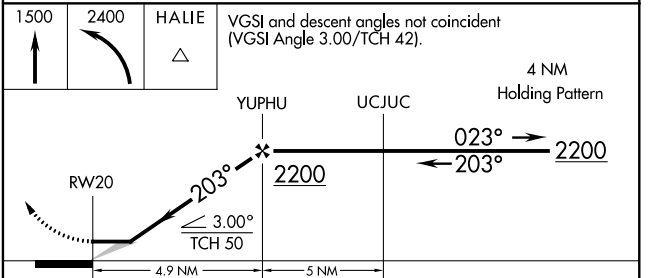
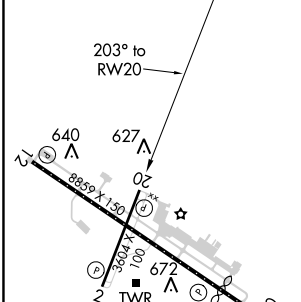
GARY/CHICAGO INTL (GYY)

GPS or RNP-0.3 required.	MISSED APPROACH: Climb to 1500 then climbing left turn to 2400 direct HALIE WP and hold.
NA	DME/DME RNP-0.3 NA.

ATIS <b>134.575</b>	CHICAGO APP CON <b>133.1 285.6</b>	GARY TOWER ★ <b>125.6 (CTAF) 0</b>	GND CON <b>121.9</b>
------------------------	---------------------------------------	---------------------------------------	-------------------------



ELEV 592	<b>D</b>	TDZE 591
----------	----------	----------



VGSI and descent angles not coincident (VGSI Angle 3.00/TCH 42).				
CATEGORY	A	B	C	D
GLS PA DA	NA			
LNAV/VNAV DA	NA			
LNAV MDA	1080-1 489 (500-1)	1080-1¼ 489 (500-1¼)	1080-1½ 489 (500-1½)	1080-1½ 489 (500-1½)
CIRCLING	1140-1 548 (600-1)	1180-1½ 588 (600-1½)	1180-2 588 (600-2)	1180-2 588 (600-2)

REIL Rws 1, 2 and 20   
 HIRL Rwy 12-30   
 MIRL Rwy 2-20

EC-2, 18 JUN 2020 to 16 JUL 2020

EC-2, 18 JUN 2020 to 16 JUL 2020