

WAAS CH 69338 W02A	APP CRS 023°	Rwy Idg TDZE Apt Elev	3604 591 597
--	------------------------	-----------------------------	---

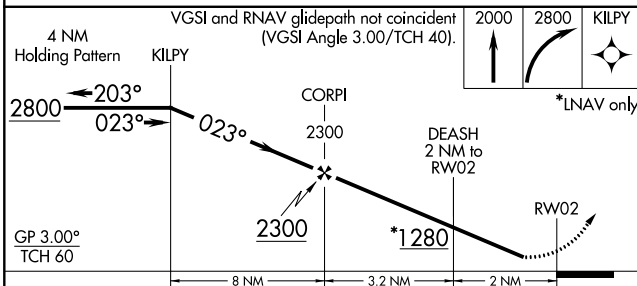
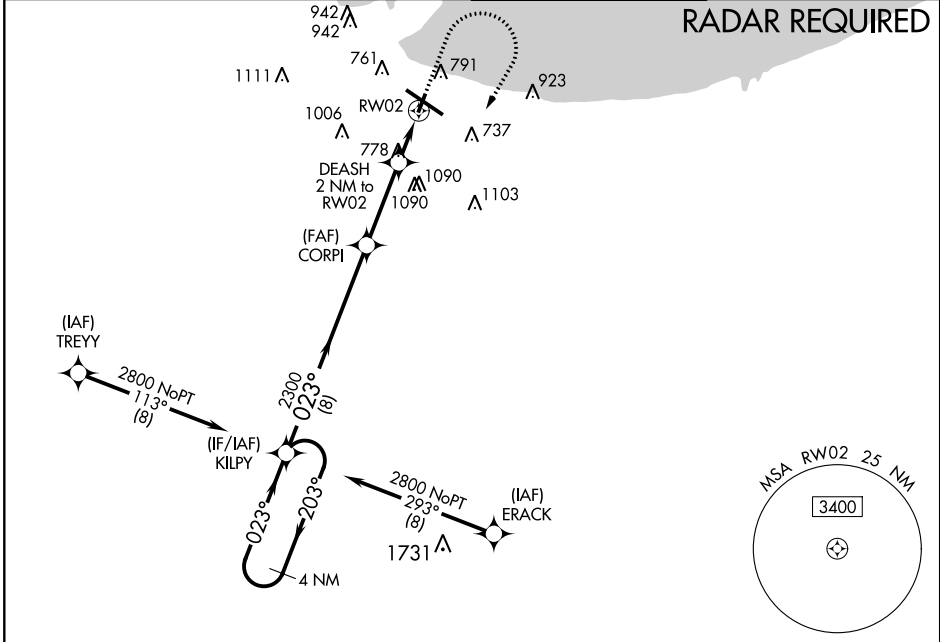
RNAV (GPS) RWY 2

GARY/CHICAGO INTL (GYY)

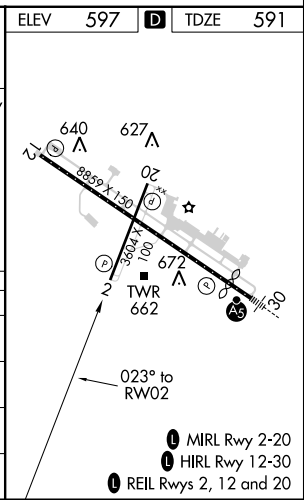
▼ For uncompensated Baro-VNAV systems, LNAV/VNAV NA below -16°C (4°F) or above 54°C (130°F).
▲ DME/DME RNP-0.3 NA. Helicopter visibility reduction below 3/4 SM NA. When local altimeter setting not received, use Chicago Midway Intl altimeter setting and increase LPV DA to 947 feet, LNAV/VNAV DA to 977 feet, all MDA 60 feet; increase LPV and LNAV/VNAV all Cats visibility 1/8 mile, and Circling Cat C and D visibility 1/4 mile. Baro-VNAV NA when using Chicago Midway Intl altimeter setting.

MISSED APPROACH:
 Climb to 2000 then climbing right turn to 2800 direct KILPY and hold.

ATIS 134.575	CHICAGO APP CON 133.1 285.6	GARY TOWER ★ 125.6 (CTAF) 0	GND CON 121.9
------------------------	---------------------------------------	---------------------------------------	-------------------------



CATEGORY	A	B	C	D
LPV DA	901-1 310 (400-1)			
LNAV/VNAV DA	931-1 3/8 340 (400-1 1/8)			
LNAV MDA	1040-1 449 (500-1)	1040-1 3/8 449 (500-1 3/8)		
C CIRCLING	1140-1 543 (600-1)	1180-1 583 (600-1)	1400-2 1/4 803 (900-2 1/4)	1420-2 3/4 823 (900-2 3/4)



EC-2, 18 JUN 2020 to 16 JUL 2020

EC-2, 18 JUN 2020 to 16 JUL 2020