

(DARCY6.DARCY) 19283

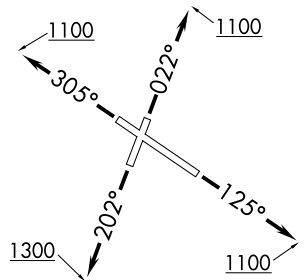
AL-748 (FAA)

GARY/CHICAGO INTL (GYY)
GARY, INDIANA

DARCY SIX DEPARTURE (RNAV)

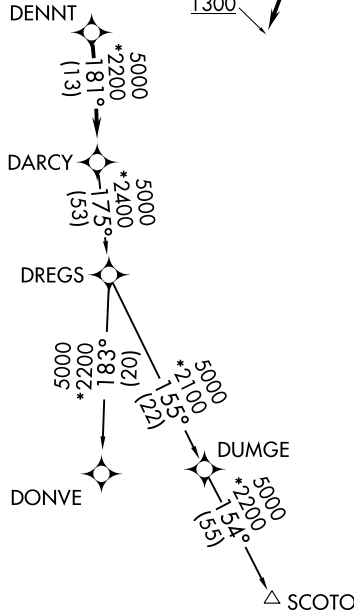
ATIS
134.575
GND CON
121.9
GARY TOWER ★
125.6
CHICAGO DEP CON
133.1 285.6

**TOP ALTITUDE:
3000**



TAKEOFF MINIMUMS:

Rwy 2: Standard with minimum climb of 323' per NM to 900.
Rwys 12, 20, 30: Standard.



NOTE: RADAR required.
NOTE: DME/DME/IRU or GPS required.
NOTE: RNAV 1.
NOTE: Turbojet departures maintain 250K until advised by ATC.

NOTE: Chart not to scale.

DEPARTURE ROUTE DESCRIPTION

TAKEOFF RUNWAY 2: Climb heading 022° to 1100, then as assigned by ATC, for vectors to DENNT. Thence. . . .

TAKEOFF RUNWAY 12: Climb heading 125° to 1100, then as assigned by ATC, for vectors to DENNT. Thence. . . .

TAKEOFF RUNWAY 20: Climb heading 202° to 1300, then as assigned by ATC, for vectors to DENNT. Thence. . . .

TAKEOFF RUNWAY 30: Climb heading 305° to 1100, then as assigned by ATC, for vectors to DENNT. Thence. . . .

. . . . on track 181° to DARC, then on (transition). Maintain 3000.
Expect filed altitude 10 minutes after departure.

DONVE TRANSITION (DARCY6.DONVE):
SCOTO TRANSITION (DARCY6.SCOTO):

DARCY SIX DEPARTURE (RNAV)
(DARCY6.DARCY) 10OCT19

GARY, INDIANA
GARY/CHICAGO INTL (GYY)

EC-2, 18 JUN 2020 to 16 JUL 2020

EC-2, 18 JUN 2020 to 16 JUL 2020