

VOR/DME PWA 113.4 Chan 81	APP CRS 176°	Rwy Idg 6844 TDZE 1291 Apt Elev 1300
---	------------------------	---

VOR RWY 17L

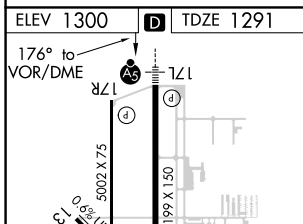
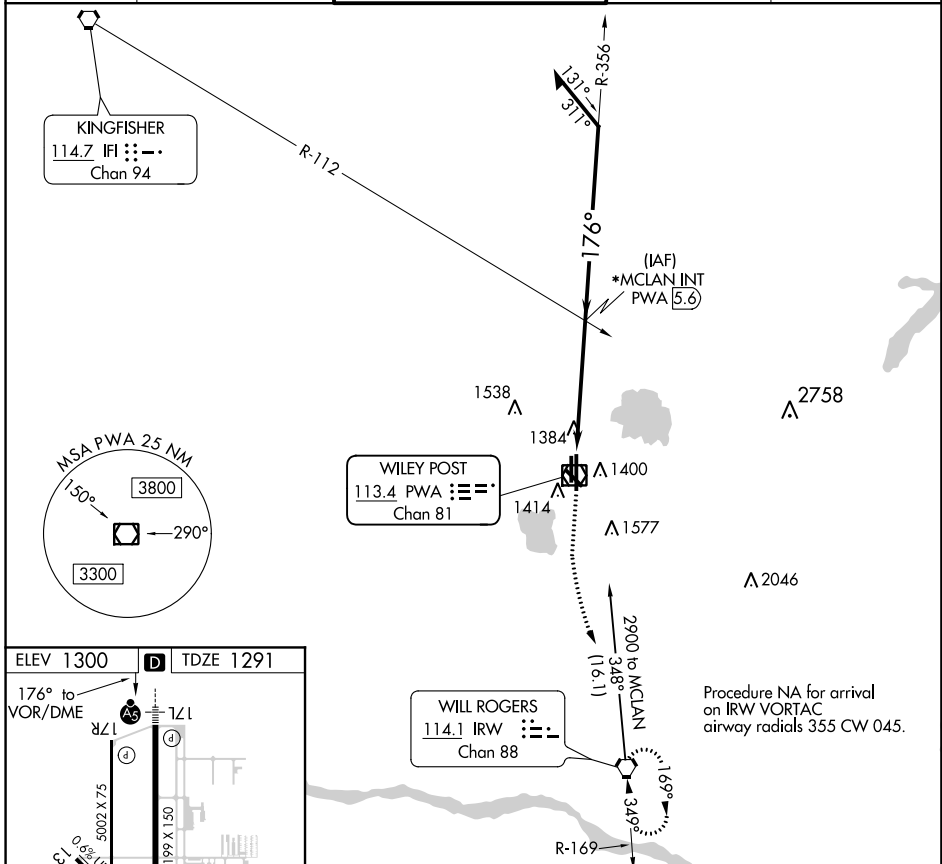
WILEY POST (PWA)

VDP NA when using Will Rogers World altimeter setting. For inop ALS, increase S-17L Cat C/D visibility to 1 SM. For inop ALS, when using Will Rogers World altimeter setting, increase Cat C/D visibility to 1½ SM. When local altimeter setting not received, use ASR Will Rogers World altimeter setting and increase all MDA 40 feet and increase Cat C/D visibility ½ SM. *RADAR fix in lieu of MCLAN INT will be provided on pilot request.

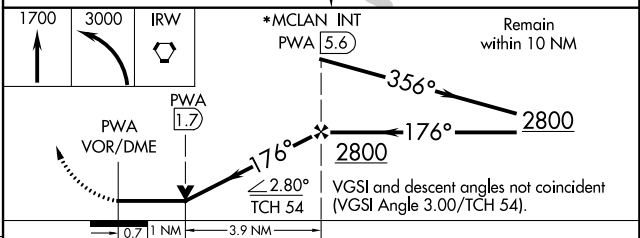


MISSED APPROACH: Climb to 1700 then climbing left turn to 3000 direct IRW VORTAC and hold.

ATIS 128.725	OKE CITY APP CON 124.6 266.8	WILEY POST TOWER* 126.9 (CTAF) 306.9	GND CON 121.7	UNICOM 122.95
------------------------	--	--	-------------------------	-------------------------



ELEV 1300	D	TDZE 1291			
176° to VOR/DME	AS	17L			
0.9 NM/1.0	5002 X 75	7199 X 150			
3	4214 X 100	TWR 1349			
HIRL Rwy 17L-35R	35L	35R			
REIL Rwy 17R and 35L					
MIRL Rwy 13-31 and 17R-35L					
FAF to MAP 5.6 NM					
Knots	60	90	120	150	180
Min:Sec	5:36	3:44	2:48	2:14	1:52



CATEGORY	A	B	C	D
S-17L	1660-½	369 (400-½)	1660-⅝	369 (400-⅝)

SC-1, 18 JUN 2020 to 16 JUL 2020

SC-1, 18 JUN 2020 to 16 JUL 2020