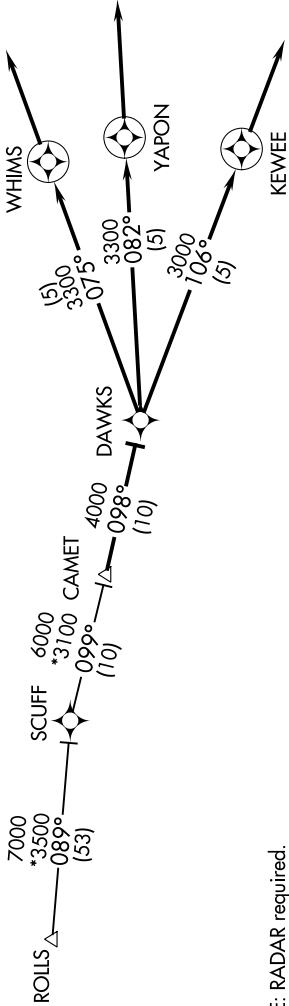


# DAWKS ONE ARRIVAL (RNAV)

OKLAHOMA CITY, OKLAHOMA

SC-1, 18 JUN 2020 to 16 JUL 2020

OKE CITY APP CON  
124.6 266.8  
WILEY POST ATIS  
128.725  
TINKER AFB ATIS \*  
270.1  
UNIVERSITY OF OKLAHOMA  
WESTHEIMER AWOS-3  
119.55



NOTE: RADAR required.  
NOTE: RNAV 1.  
NOTE: DME/DME/IRU or GPS required.

### ARRIVAL ROUTE DESCRIPTION

ROLLS TRANSITION (ROLLS.DAWKS1):

SCUFF TRANSITION (SCUFF.DAWKS1):

From CAMET on track 098° to DAWKS.

LANDING OUN: From DAWKS on track 106° to KEWEE, then on track 106°.

Expect RADAR vectors to final approach course.

LANDING TIK: From DAWKS on track 082° to YAPON, then on track 082°.

Expect RADAR vectors to final approach course.

LANDING PWA RW17L: From DAWKS on track 075° to WHIMS, then on track 075°.

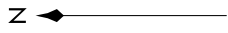
Expect RADAR vectors to final approach course.

LANDING PWA RW35R: From DAWKS on track 106° to KEWEE, then on track 106°.

Expect RADAR vectors to final approach course.

WILEY POST

TINKER AFB



UNIVERSITY OF OKLAHOMA  
WESTHEIMER

NOTE: Chart not to scale.

# DAWKS ONE ARRIVAL (RNAV)

(CAMET.DAWKS1) 24JUL14

OKLAHOMA CITY, OKLAHOMA

SC-1, 18 JUN 2020 to 16 JUL 2020