

VOR/DME LOZ 116.1 Chan 108	APP CRS 025°	Rwy Idg 5000 TDZE 1212 Apt Elev 1212
--	------------------------	---

VOR RWY 6

LONDON-CORBIN AIRPORT-MAGEE FIELD (LOZ)

⚠ When local altimeter setting not received, use Somerset altimeter setting and increase all MDAs 100 feet and increase S-6 Cat C/D and Circling Cat C/D visibility ¼ mile. Night landing: Rwy 6 NA.

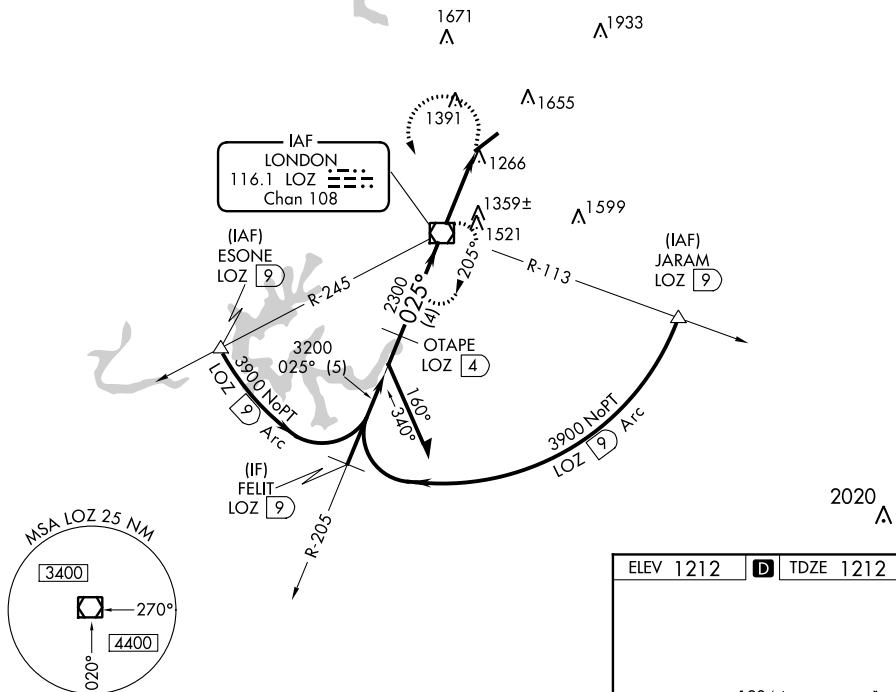
MISSED APPROACH: Climbing left turn to 4000 direct LOZ VOR/DME and hold, continue climb-in-hold to 4000.

ASOS
119.075

INDIANAPOLIS CENTER
124.625 371.925

UNICOM
123.0 (CTAF) 0

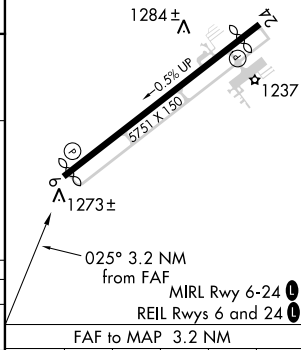
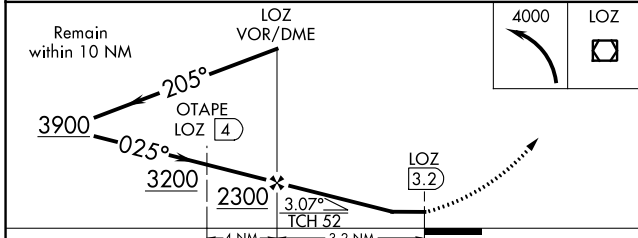
DME REQUIRED



SE-1, 18 JUN 2020 to 16 JUL 2020

SE-1, 18 JUN 2020 to 16 JUL 2020

ELEV 1212	D TDZE 1212
-----------	--------------------



CATEGORY	A	B	C	D
S-6	1620-1	408 (500-1)	1620-1¼	408 (500-1¼)
CIRCLING	1780-1	568 (600-1)	2040-2½ 828 (900-2½)	2040-2¾ 828 (900-2¾)

Knots	60	90	120	150	180
Min:Sec	3:12	2:08	1:36	1:17	1:04

VOR RWY 6