

| | | | |
|---|------------------------|---|-------------|
| LOC/DME I-LOZ 110.9 Chan 46 | APP CRS 057° | Rwy Idg TDZE 1212 Apt Elev 1212 | 5000 |
|---|------------------------|---|-------------|

ILS or LOC RWY 6

LONDON-CORBIN AIRPORT-MAGEE FIELD (LOZ)

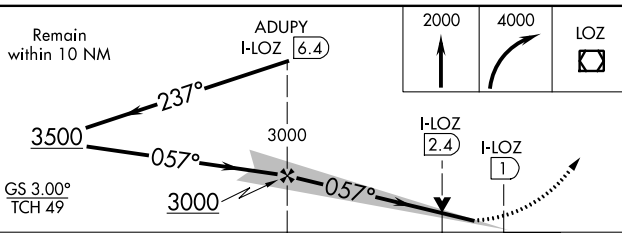
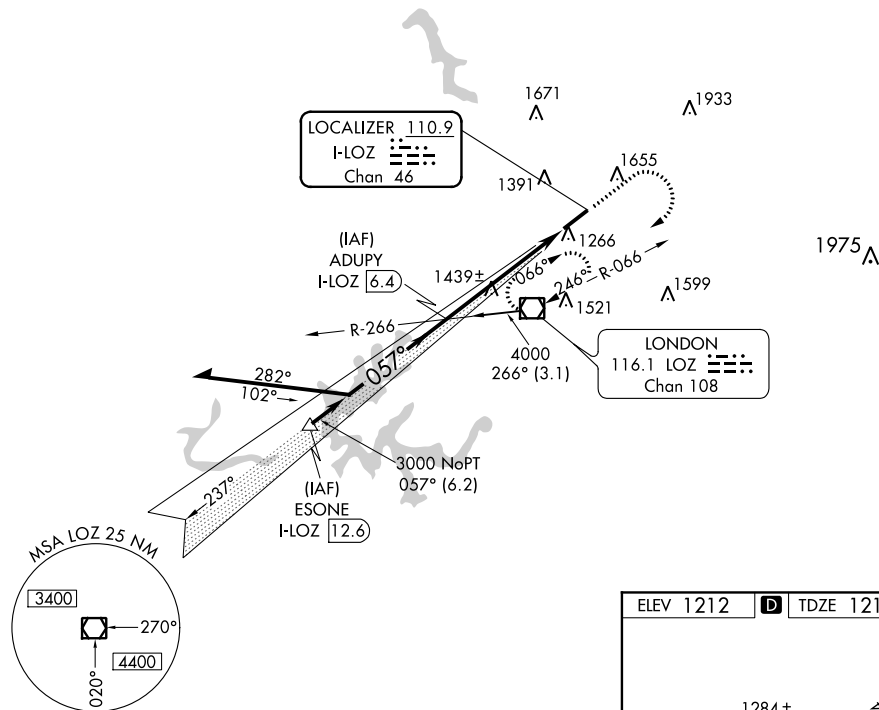
⚠ Visibility reduction by helicopters NA. VDP NA when using Somerset altimeter setting. When local altimeter setting not received, use Somerset altimeter setting and increase all DAs/MDAs 100 feet, and increase visibility S-ILS 6 ¼ mile all Cats, S-LOC 6 Cat C ¼ mile Cat D ½ mile and Circling Cats C/D ¼ mile.

MISSED APPROACH: Climb to 2000 then climbing right turn to 4000 direct LOZ VOR/DME and hold, continue climb-in-hold to 4000.

ASOS
119.075

INDIANAPOLIS CENTER
124.625 371.925

UNICOM
123.0 (CTAF) 1



| | |
|-----------|--------------------|
| ELEV 1212 | D TDZE 1212 |
|-----------|--------------------|

1284±, 0.5% UP, 571 X 150, 1237, 1273±, 057° 5.4 NM from FAF

MIRL Rwy 6-24 1
REIL Rws 6 and 24 1

| | | | | | |
|-------------------|------|------|------|------|------|
| FAF to MAP 5.4 NM | | | | | |
| Knots | 60 | 90 | 120 | 150 | 180 |
| Min:Sec | 5:24 | 3:36 | 2:42 | 2:10 | 1:48 |

| CATEGORY | A | B | C | D |
|----------|--------|-------------|-------------------------|-------------------------|
| S-ILS 6 | | 1462-1 | 250 (300-1) | |
| S-LOC 6 | 1720-1 | 508 (600-1) | 1720-1½ | 508 (600-1½) |
| CIRCLING | 1780-1 | 568 (600-1) | 2040-2½ 828 (900-2½) | 2040-2¾ 828 (900-2¾) |

ILS or LOC RWY 6

SE-1, 18 JUN 2020 to 16 JUL 2020

SE-1, 18 JUN 2020 to 16 JUL 2020