

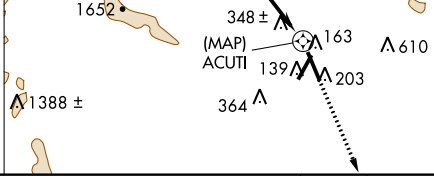
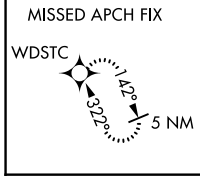
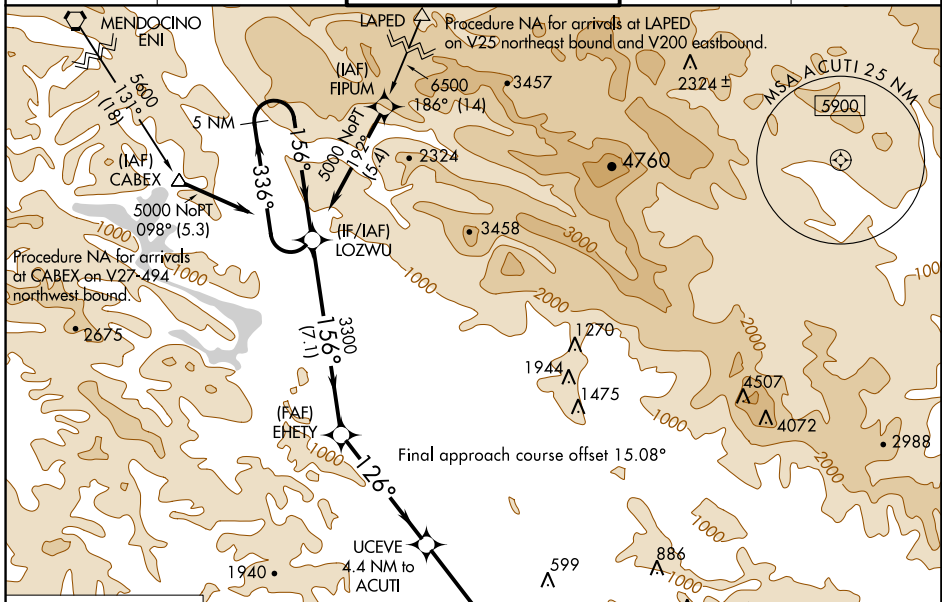
APP CRS	Rwy Idg	5880
126°	TDZE	122
	Apt Elev	129

RNAV (GPS) RWY 14

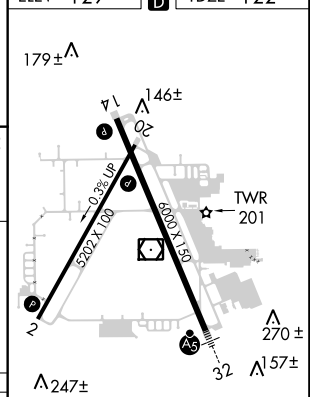
CHARLES M SCHULZ-SONOMA COUNTY (STS)

RNP APCH.		MISSED APPROACH: Climb to 5000 direct WDSTC and hold, continue climb-in-hold to 5000.		
		Rwy 14 helicopter visibility reduction below 3/4 SM NA.		

ATIS 120.55	OAKLAND CENTER 127.8 353.5	SANTA ROSA TOWER* 118.5 (CTAF) 363.0	GND CON 121.9	UNICOM 122.95
-----------------------	--------------------------------------	--	-------------------------	-------------------------



ELEV 129	TDZE 122
----------	----------



5 NM Holding Pattern	LOZWU	EHETY	UCEVE 4.4 NM to ACUTI	ACUTI
5000	3300	1700	5000	5000
336°	156°	156°	126°	2.99°
7.1 NM	5 NM	3.5 NM	0.9 NM	0.5 NM

CATEGORY	A	B	C	D
LNVA MDA	600-1	478 (500-1)	600-1 3/8	478 (500-1 3/8)
CIRCLING	600-1 471 (500-1)	680-1 551 (600-1)	1080-3 951 (1000-3)	1420-3 1291 (1300-3)

MRL Rwy 2-20	HIRL Rwy 14-32
--------------	----------------

SW-2, 18 JUN 2020 to 16 JUL 2020

SW-2, 18 JUN 2020 to 16 JUL 2020