

WAAS CH <b>99429</b> <b>W35B</b>	APP CRS <b>355°</b>	Rwy Idg TDZE <b>480</b> Apt Elev <b>542</b>	<b>9000</b>
--	------------------------	---	-------------

# RNAV (GPS) Y RWY 35R

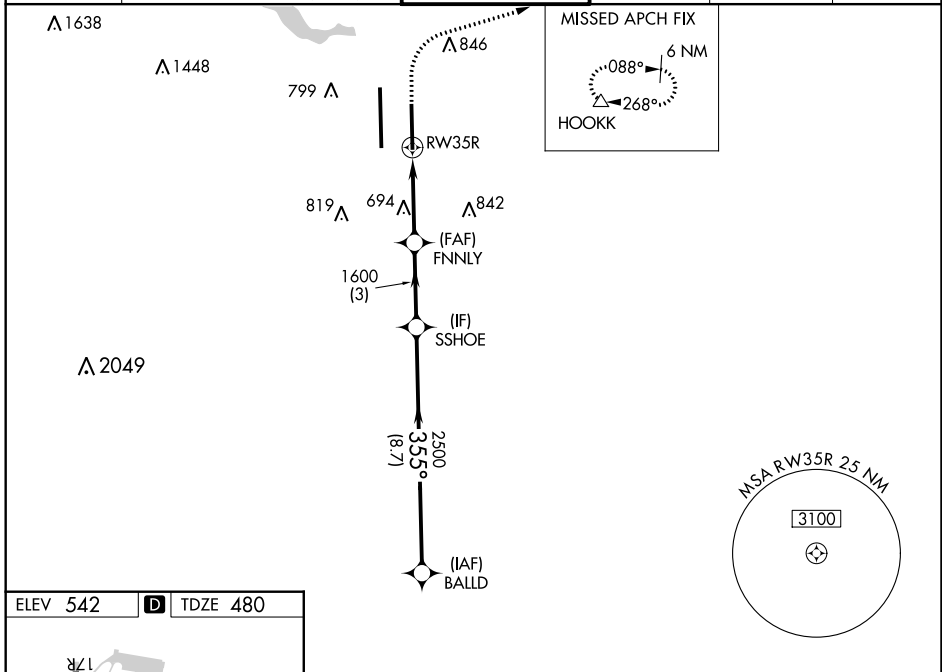
AUSTIN-BERGSTROM INTL (AUS)

**⚠** For uncompensated Baro-VNAV systems, LNAV/VNAV NA below -6°C (22°F) or above 54°C (130°F). Simultaneous approach authorized. LNAV procedure NA during simultaneous operations. Use of FD or AP providing RNAV hook guidance required during simultaneous operations. DME/DME RNP-0.3 NA. For Inop ALS increase LPV Cat E visibility to RVR 4000, LNAV/VNAV Cat E visibility to 1½ SM and LNAV Cats C/D/E visibility to 1½ SM.

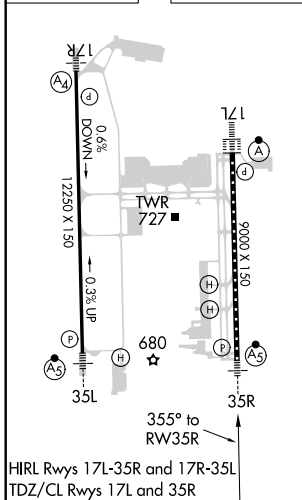


**MISSED APPROACH:**  
Climb to 1000 then climbing right turn to 3000 direct HOOKK and hold.

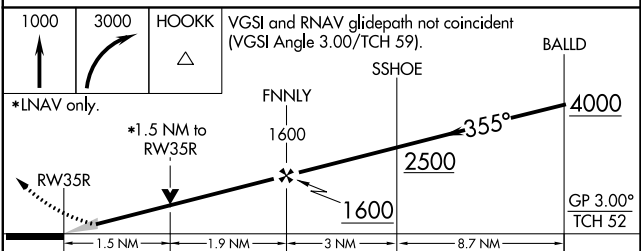
D-ATIS <b>124.4</b>	AUSTIN APP CON <b>127.225 317.65</b> (EAST) <b>120.875 270.25</b> (SOUTH) <b>119.0 370.85</b> (WEST)	AUSTIN TOWER <b>121.0 281.5</b>	GND CON <b>121.9 348.6</b>	CLNC DEL <b>125.5 263.0</b>	CPDLC
------------------------	---	------------------------------------	-------------------------------	--------------------------------	-------



ELEV <b>542</b>	<b>D</b>	TDZE <b>480</b>
-----------------	----------	-----------------



HIRL Rwy 17L-35R and 17R-35L  
TDZ/CL Rwy 17L and 35R



CATEGORY	A	B	C	D	E
LPV DA	680/18		200 (200-½)		
LNAV/VNAV DA	971-1¼		491 (500-1¼)		
LNAV MDA	1000/24	520 (500-½)	1000/55		520 (500-1)
<b>C</b> CIRCLING	1040-1 498 (500-1)	1100-1 558 (600-1)	1200-1¾ 658 (700-1¼)	1200-2 658 (700-2)	1520-3 978 (1000-3)

SC-3, 18 JUN 2020 to 16 JUL 2020

SC-3, 18 JUN 2020 to 16 JUL 2020