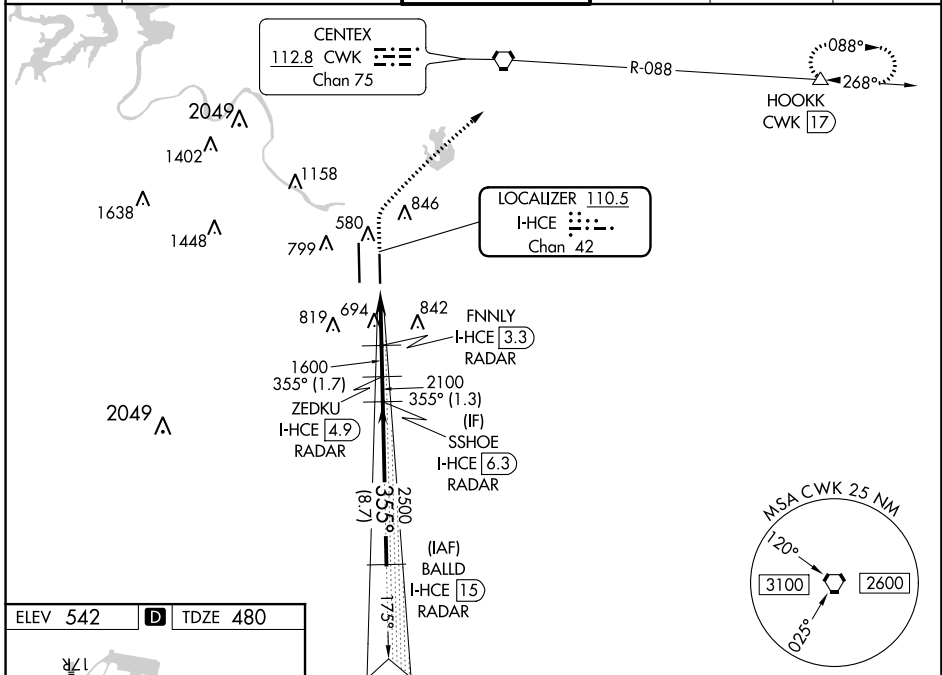


LOC/DME I-HCE 110.5 Chan 42	APP CRS 355°	Rwy Idg 9000 TDZE 480 Apt Elev 542
---	------------------------	---

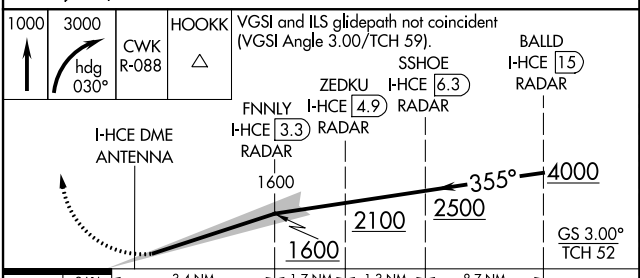
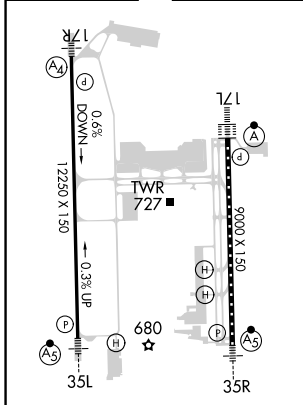
ILS RWY 35R (SA CAT I & II)

AUSTIN-BERGSTROM INTL (AUS)

DME required. RADAR required for procedure entry.		MALSR 	MISSED APPROACH: Climb to 1000 then climbing right turn to 3000 on heading 030° and CWK VORTAC R-088 to HOOKK/CWK 17 DME and hold.		
D-ATIS 124.4	AUSTIN APP CON 127.225 317.65 (EAST) 120.875 270.25 (SOUTH) 119.0 370.85 (WEST)	AUSTIN TOWER 121.0 281.5	GND CON 121.9 348.6	CLNC DEL 125.5 263.0	CPDLC



ELEV 542	D	TDZE 480
-----------------	----------	-----------------



CATEGORY	A	B	C	D
S-ILS 35R		SA CAT I RA 235/14	150 DA 630	
S-ILS 35R		SA CAT II RA 110/12	100 DA 580	

SA CATEGORY I & II ILS - SPECIAL AIRCREW & AIRCRAFT CERTIFICATION REQUIRED

HIRL Rwy 17R-35L and 17L-35R
TDZ/CL Rwy 17L and 35R

SC-3, 18 JUN 2020 to 16 JUL 2020

SC-3, 18 JUN 2020 to 16 JUL 2020