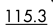
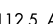


BLEWE FOUR ARRIVAL

AUSTIN APP CON
127.225 317.65
AUSTIN-BERGSTROM INTL D-ATIS
124.4
AUSTIN EXECUTIVE AWOS-3
118.825
SAN MARCOS RGNL ATIS
120.825
LAGO VISTA TX-RUSTY ALLEN ASOS
119.375

WACO
115.3 ACT 
Chan 100
N31°39.74'-W97°16.14'
L-19, H-6

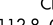
MAVERICK
113.1 TTT 
Chan 78
L-17, H-6

GOOCH SPRINGS
112.5 AGJ 
Chan 72
L-19, H-6

WINDU
N31°31.83'
W97°04.95'
L-19, H-6-7

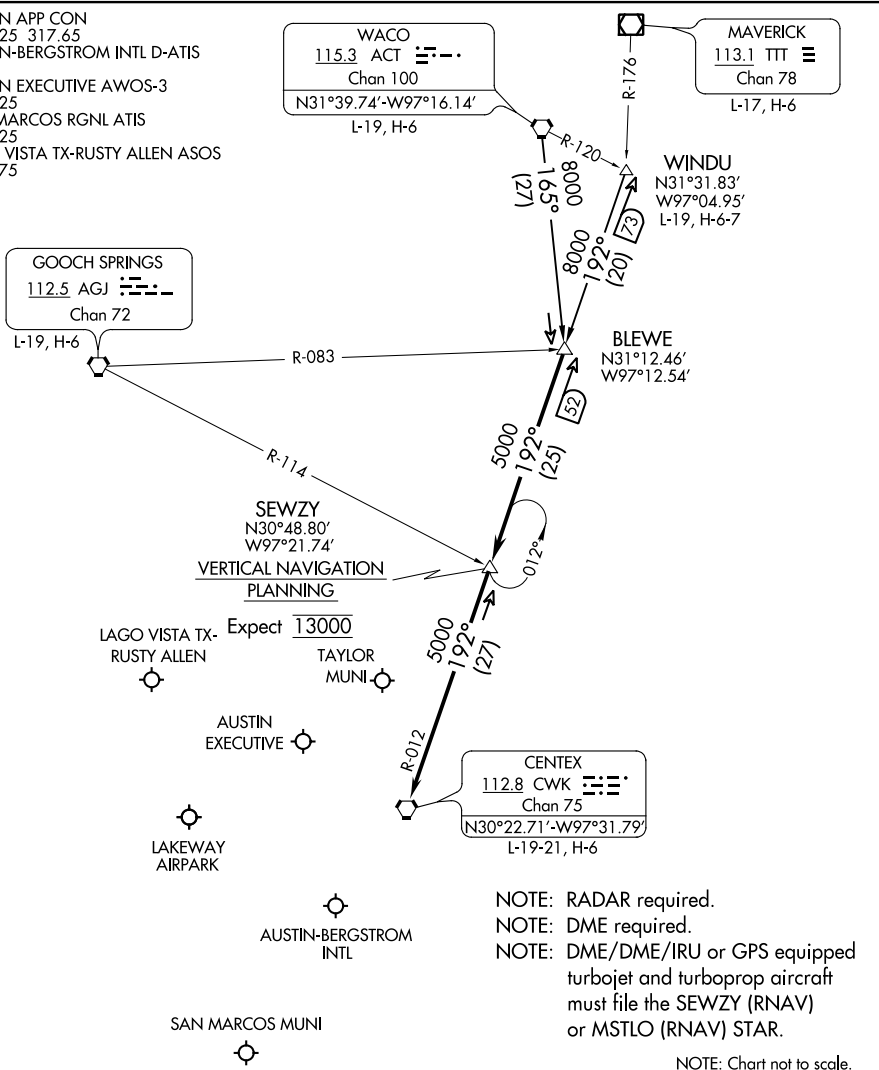
BLEWE
N31°12.46'
W97°12.54'

SEWZY
N30°48.80'
W97°21.74'

CENTEX
112.8 CWK 
Chan 75
N30°22.71'-W97°31.79'
L-19-21, H-6

SC-3, 18 JUN 2020 to 16 JUL 2020

SC-3, 18 JUN 2020 to 16 JUL 2020



ARRIVAL ROUTE DESCRIPTION

WACO TRANSITION (ACT.BLEWE4): From over ACT VORTAC on ACT R-165 to BLEWE INT. Thence . . .

WINDU TRANSITION (WINDU.BLEWE4): From over WINDU INT on CWK R-012 to BLEWE INT. Thence . . .

. . . From over BLEWE on CWK R-012 to SEWZY, then on CWK R-012 to CWK VORTAC. Expect vectors to final approach course at or prior to CWK VORTAC.