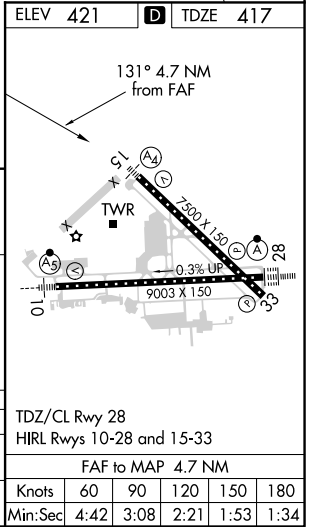
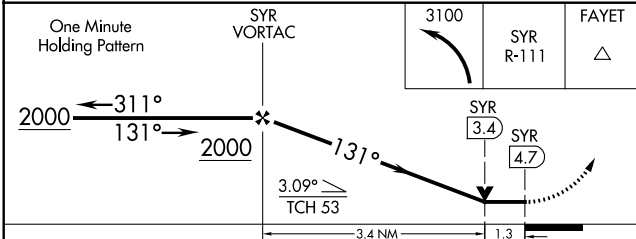
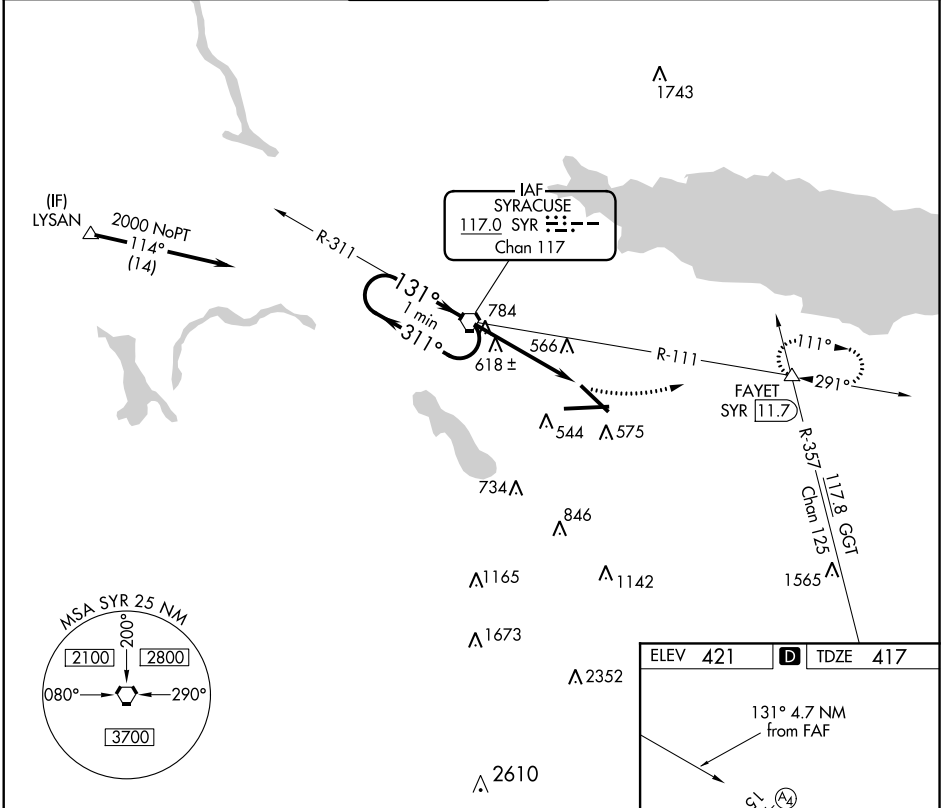


VORTAC SYR <b>117.0</b> Chan <b>117</b>	APP CRS <b>131°</b>	Rwy ldg TDZE Apt Elev	<b>7500</b> <b>417</b> <b>421</b>
---	------------------------	-----------------------------	---

# VOR RWY 15

SYRACUSE HANCOCK INTL (SYR)

<b>▼</b> Inoperative table does not apply. Helicopter visibility reduction below 3/4 SM NA.		MALS 	MISSED APPROACH: Climbing left turn to 3100 via SYR R-111 to FAYET INT/SYR 11.7 DME and hold, continue climb-in-hold to 3100.	
ATIS <b>124.225</b>	SYRACUSE APP CON <b>126.125 269.125</b>	SYRACUSE TOWER <b>120.3 239.0</b>	GND CON <b>121.7 348.6</b>	CLNC DEL <b>125.05 257.775</b>



CATEGORY	A	B	C	D
S-15	880-1	463 (500-1)	880-1 3/8	463 (500-1 3/8)
CIRCLING	880-1 459 (500-1)	900-1 479 (500-1)	900-1 1/2 479 (500-1 1/2)	980-2 559 (600-2)

NE-2, 18 JUN 2020 to 16 JUL 2020

NE-2, 18 JUN 2020 to 16 JUL 2020