

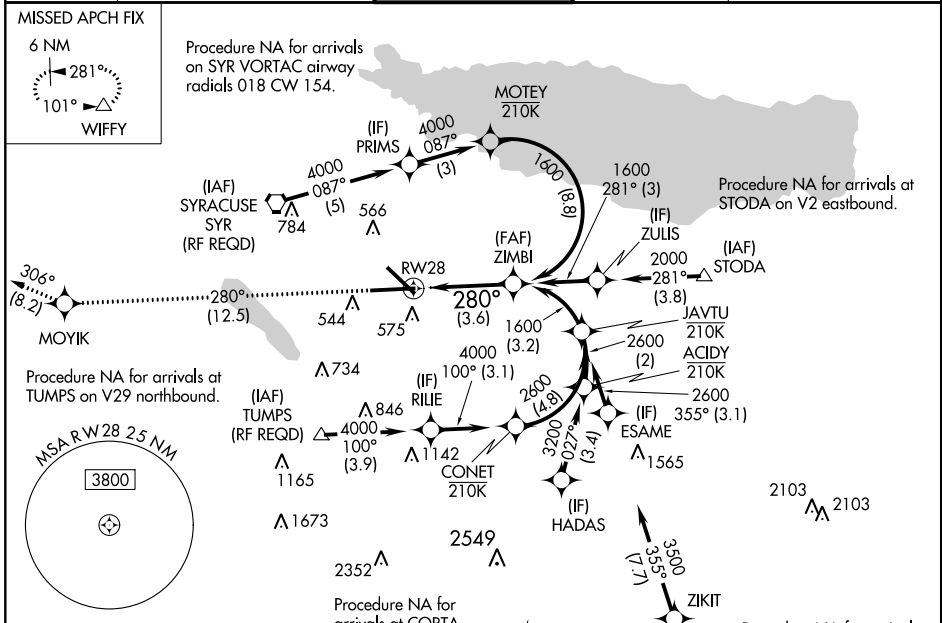
APP CRS	Rwy Idg	9003
280°	TDZE	413
	Apt Elev	421

RNAV (RNP) Y RWY 28

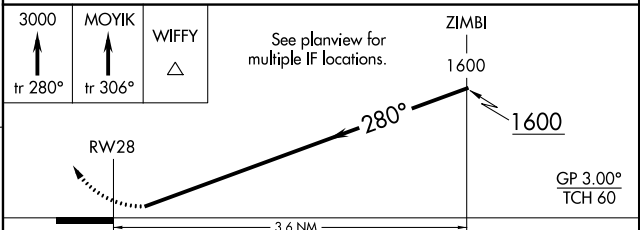
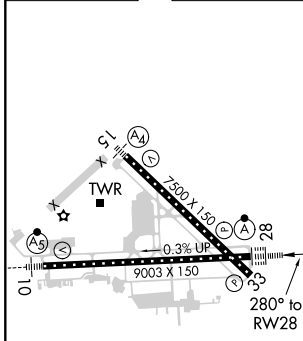
SYRACUSE HANCOCK INTL (SYR)

<p>▽ GPS required. For uncompensated Baro-VNAV systems, procedure NA below -18°C (0°F) or above 54°C (130°F). For inoperative ALSF-2, increase RNP 0.15 all Cats visibility to 1½. For inoperative ALSF-2, increase RNP 0.30 all Cats visibility to 1¾.</p>	<p>ALSF-2</p>	<p>MISSED APPROACH: Climb to 3000 on track 280° to MOYIK and on track 306° to WIFFY and hold.</p>

<p>ATIS</p> <p>124.225</p>	<p>SYRACUSE APP CON</p> <p>126.125 269.125</p>	<p>SYRACUSE TOWER</p> <p>120.3 239.0</p>	<p>GND CON</p> <p>121.7 348.6</p>	<p>CLNC DEL</p> <p>125.05 257.775</p>
-----------------------------------	---	---	--	--



ELEV	421	D	TDZE	413
------	------------	----------	------	------------



CATEGORY	A	B	C	D
RNP 0.15 DA		862/55	449 (500-1)	
RNP 0.30 DA		957-1¾	544 (600-1¾)	

AUTHORIZATION REQUIRED

NE-2, 18 JUN 2020 to 16 JUL 2020

NE-2, 18 JUN 2020 to 16 JUL 2020