

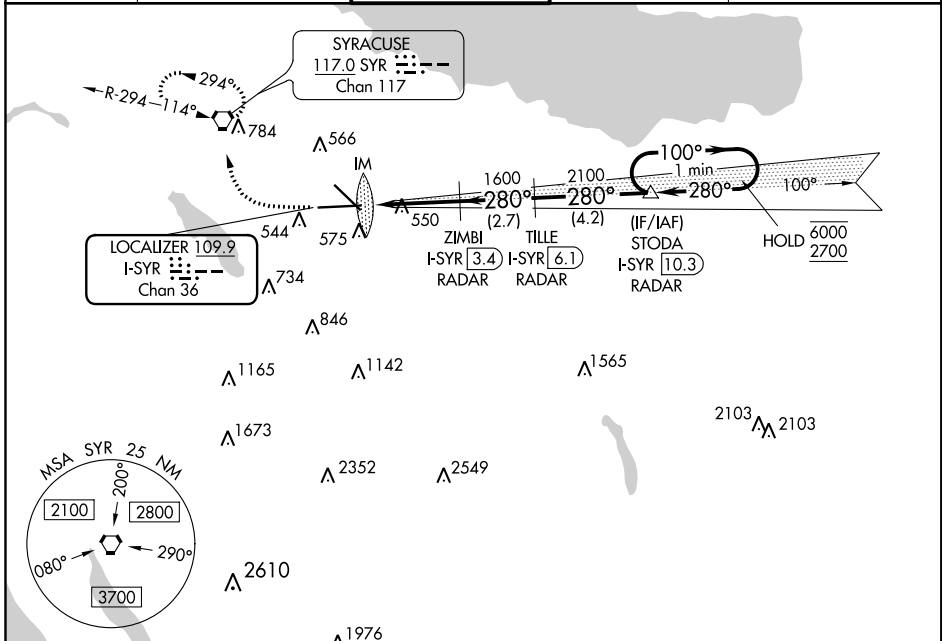
LOC/DME I-SYR <b>109.9</b> Chan <b>36</b>	APP CRS <b>280°</b>	Rwy Idg TDZE Apt Elev	<b>9003</b> <b>413</b> <b>421</b>
---	------------------------	-----------------------------	---

# ILS RWY 28 (SA CAT I)

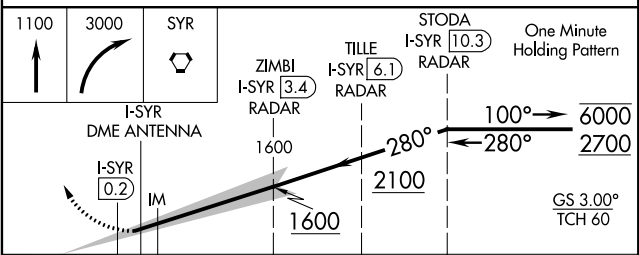
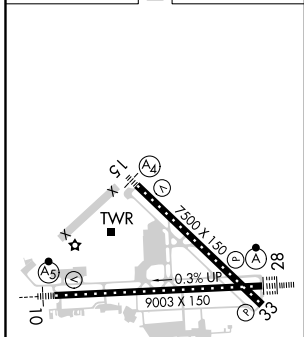
SYRACUSE HANCOCK INTL (SYR)

DME or RADAR required.		ALSF-2	MISSED APPROACH: Climb to 1100 then climbing right turn to 3000 direct SYR VORTAC and hold, continue climb-in-hold to 3000.
Requires specific OPSPEC, MSPEC, or LOA approval and use of HUD to DH.			

ATIS <b>124.225</b>	SYRACUSE APP CON <b>126.125 269.125</b>	SYRACUSE TOWER <b>120.3 239.0</b>	GND CON <b>121.7 348.6</b>	CLNC DEL <b>125.05 257.775</b>
------------------------	--	--------------------------------------	-------------------------------	-----------------------------------



ELEV 421	<b>D</b>	TDZE 413
----------	----------	----------



CATEGORY	A	B	C	D
S-ILS 28	RA 150/14		150 DA 563	

**SA CATEGORY I ILS - SPECIAL AIRCREW & AIRCRAFT CERTIFICATION REQUIRED**

NE-2, 18 JUN 2020 to 16 JUL 2020

NE-2, 18 JUN 2020 to 16 JUL 2020