

LOC/DME I-SCK <b>109.1</b> Chan <b>28</b>	APP CRS <b>294°</b>	Rwy Idg TDZE Apt Elev	<b>8650</b> <b>32</b> <b>33</b>
---	------------------------	-----------------------------	---------------------------------------

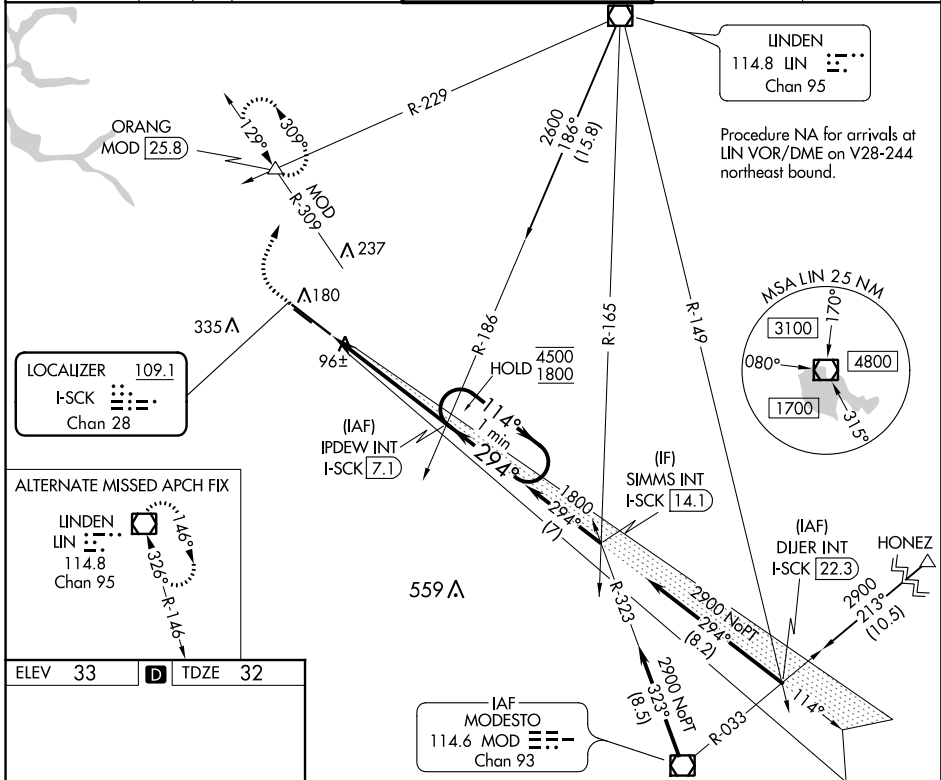
# ILS RWY 29R (SA CAT II)

## STOCKTON METROPOLITAN (SCK)

**Reduced lighting:** requires specific OPSPEC, MSPEC, or LOA approval and use of autoland or HUD to touchdown. Procedure NA when tower closed.

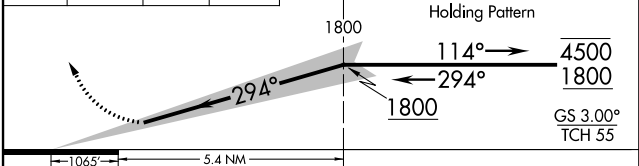
**MALS R** MISSED APPROACH: Climb to 500 then climbing right turn to 2000 on heading 010° and MOD VOR/DME R-309 to ORANG INT/MOD 25.8 DME and hold.

ATIS <b>118.25</b>	NORCAL APP CON (SE-NW) <b>123.85 278.3</b> (N-SE) <b>125.1 363.2</b>	STOCKTON TOWER * <b>120.3 (CTAF) 0 239.0</b>	GND CON <b>121.9</b>	UNICOM <b>122.95</b>
-----------------------	--	---	-------------------------	-------------------------



ELEV 33	<b>D</b>	TDZE 32
---------	----------	---------

500	2000	ORANG	VGSI and ILS glidepath not coincident (VGSI Angle 3.00/TCH 71).
↑	hdg 010°	MOD R-309	IPDEW INT I-SCK (7.1)



CATEGORY	A	B	C	D
S-ILS 29R		RA 105/12	100 DA 132	

**SA CATEGORY II ILS - SPECIAL AIRCREW & AIRCRAFT CERTIFICATION REQUIRED**

SW-2, 18 JUN 2020 to 16 JUL 2020

SW-2, 18 JUN 2020 to 16 JUL 2020