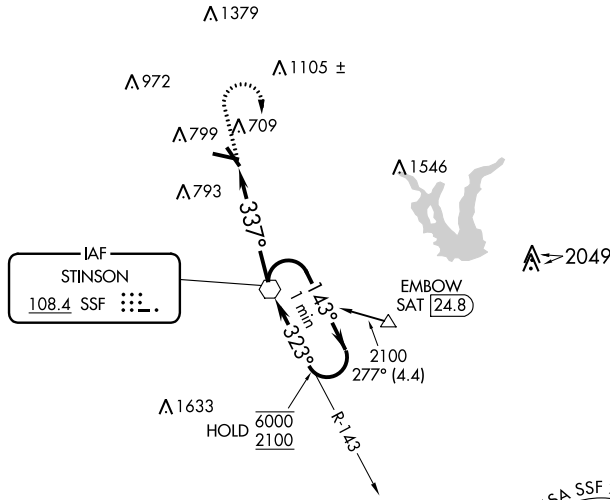


VOR SSF 108.4	APP CRS 337°	Rwy Idg 3756 TDZE 570 Apt Elev 577
-------------------------	------------------------	---

VOR RWY 32

STINSON MUNI (SSF)

<p>▽ Rwy 32 helicopter visibility reduction below 1 SM NA. Straight-in Rwy 32 NA at night, Circling Rwy 9, 32 NA at night.</p>		<p>MISSED APPROACH: Climb to 1400 then climbing right turn to 2500 direct SSF VOR and hold.</p>			
ATIS 128.8	SAN ANTONIO APP CON 125.7 290,225	STINSON TOWER* 118.2(CTAF) 379.9	GND CON 121.7 379.9	CLNC DEL 121.7	UNICOM 122.95



ELEV 577	TDZE 570
----------	----------

Profile view diagram showing the terrain profile and descent paths. The diagram includes a 5000 X 100 scale, a TWIR (Tower In Reach) point, and descent paths with 0.3% and 0.5% grades. A 337° 4.6 NM from FAF is indicated.

REIL Rwy 9, 14, 27 and 32
MIRL Rwy 9-27 and 14-32
FAF to MAP 4.6 NM

Knots	60	90	120	150	180
Min:Sec	4:36	3:04	2:18	1:50	1:32

1400	2500	SSF	VGSI and descent angles not coincident (VGSI 3.00/TCH 40).	
			One Minute Holding Pattern	
		SSSF VOR	6000 2100	
<p>4.6 NM</p>				
CATEGORY	A	B	C	D
S-32	1020-1	450 (500-1)	1020-1 $\frac{3}{8}$ 450 (500-1 $\frac{3}{8}$)	NA
CIRCLING	1040-1 463 (500-1)	1100-1 523 (600-1)	1100-1 $\frac{1}{2}$ 523 (600-1 $\frac{1}{2}$)	NA

SC-3, 18 JUN 2020 to 16 JUL 2020

SC-3, 18 JUN 2020 to 16 JUL 2020