

BOWIE SEVEN DEPARTURE

ATIS
128.8
CLNC DEL
121.7
GND CON
121.7 379.9
SAN ANTONIO DEP CON
125.7 290.225
STINSON TOWER★
118.2 379.9

SAN ANTONIO	
116.8 SAT	☰☱☲☳☴☵☶☷
Chan 115	
N29°38.64'	
W98°27.68'	

YENNS
N29°04.08'
W98°19.32'

COTULLA	
115.8 COT	☰☱☲☳☴☵☶☷
Chan 105	

MILET
N28°43.83'
W98°47.88'

THREE RIVERS	
111.4 THX	☰☱☲☳☴☵☶☷
Chan 51	
N28°30.30'	
W98°09.03'	
L-20, H-7	

CORPUS CHRISTI	
115.5 CRP	☰☱☲☳☴☵☶☷
Chan 102	
N27°54.22'	
W97°26.69'	
L-20-21, H-7	

LAREDO	
117.4 LRD	☰☱☲☳☴☵☶☷
Chan 121	
N27°28.72'	
W99°25.06'	
L-20, H-7	

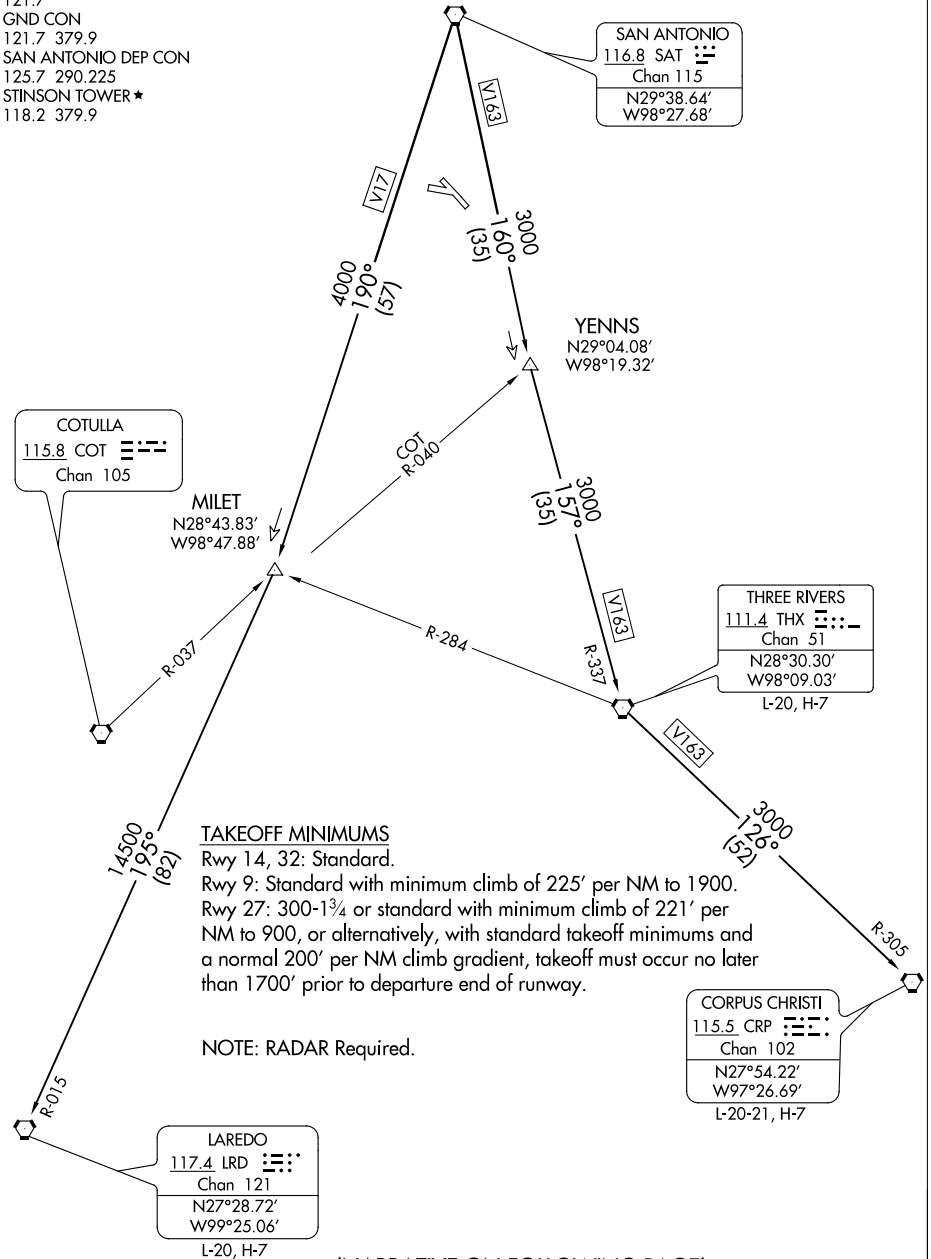
TAKEOFF MINIMUMS

Rwy 14, 32: Standard.

Rwy 9: Standard with minimum climb of 225' per NM to 1900.

Rwy 27: 300-1¾ or standard with minimum climb of 221' per NM to 900, or alternatively, with standard takeoff minimums and a normal 200' per NM climb gradient, takeoff must occur no later than 1700' prior to departure end of runway.

NOTE: RADAR Required.



SC-3, 18 JUN 2020 to 16 JUL 2020

SC-3, 18 JUN 2020 to 16 JUL 2020

NOTE: Chart not to scale

(NARRATIVE ON FOLLOWING PAGE)

BOWIE SEVEN DEPARTURE