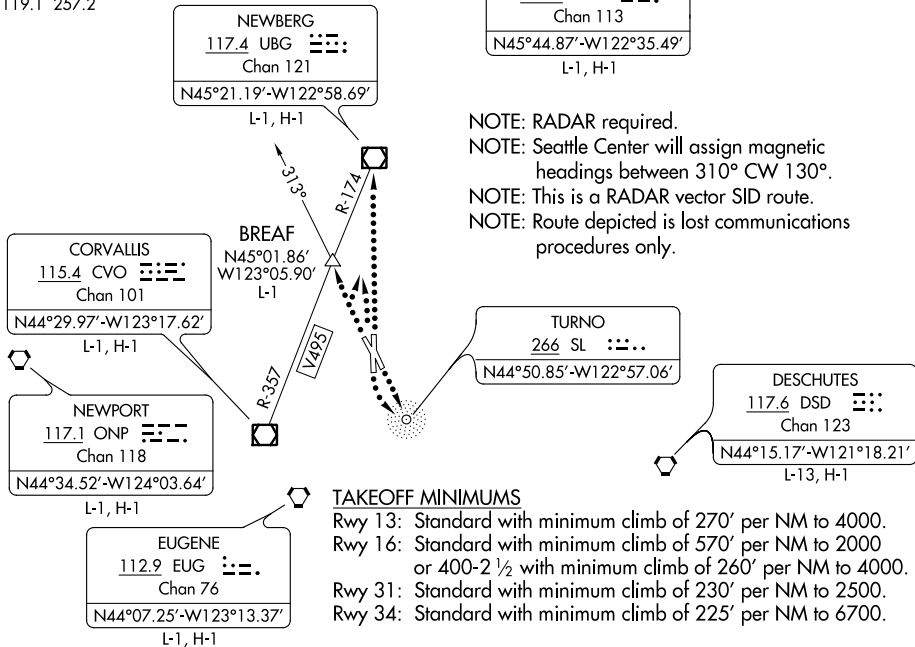


17341  
**SALEM FOUR DEPARTURE**

AL-361 (FAA)

MCNARY FIELD (SL,E)  
 SALEM, OREGON

ATIS  
 124.55  
 GND CON  
 121.9  
 SALEM TOWER ★  
 119.1 257.2



NW-1, 18 JUN 2020 to 16 JUL 2020

NW-1, 18 JUN 2020 to 16 JUL 2020

NOTE: Chart not to scale.



**DEPARTURE ROUTE DESCRIPTION**

**TAKEOFF RUNWAYS 13, 31, 34:** Climb to assigned altitude and heading between 310° CW 130° from DER, thence . . . .

**TAKEOFF RUNWAY 16:** Climbing left turn to assigned heading between 340° CW to 130° from DER to assigned altitude, thence . . . .

. . . . expect RADAR vectors with Seattle Center to assigned route. Expect filed altitude 10 minutes after departure.

**LOST COMMUNICATIONS:**

If not in contact with Seattle Center after reaching 2000, continue climb to assigned altitude.

**TAKEOFF RUNWAYS 13 and 16:** (Runway 16 turn left) proceed direct to SL NDB thence on (assigned route) (ADF required).

**TAKEOFF RUNWAYS 31 and 34:** (Runway 31 turn right) proceed direct to UBG VOR/DME thence on (assigned route).

**HELICOPTERS ONLY - RUNWAYS 31 and 34:** (Runway 34 turn left) intercept and proceed outbound on the SL NDB 313° bearing to BREAM INT, thence on (assigned route) (ADF required).

**SALEM FOUR DEPARTURE**

27APR17

SALEM, OREGON  
 MCNARY FIELD (SL,E)