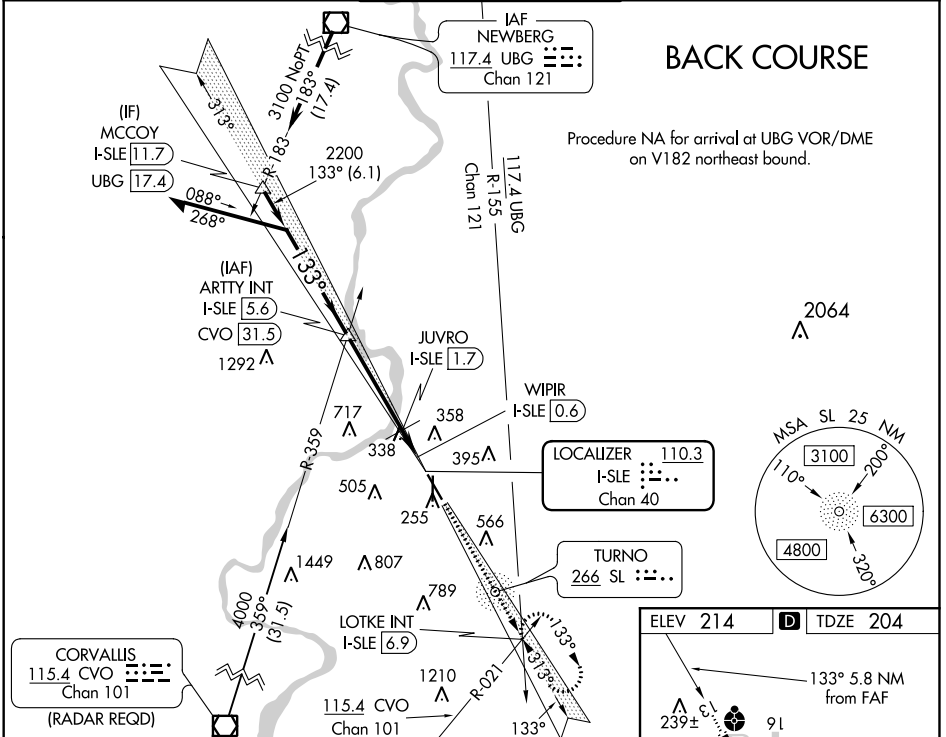


LOC/DME I-SLE 110.3 Chan 40	APP CRS 133°	Rwy Idg 5811 TDZE 204 Apt Elev 214
---	------------------------	---

LOC BC RWY 13

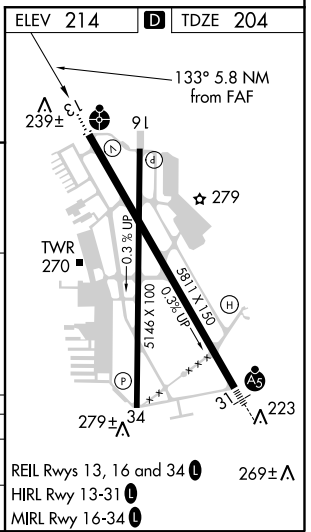
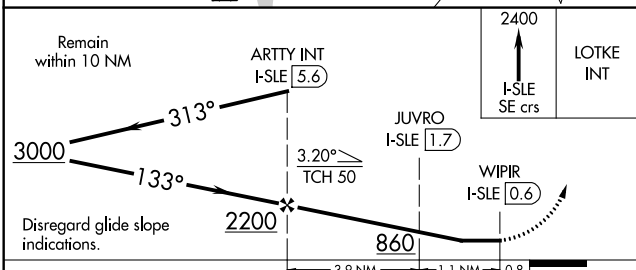
MCNARY FIELD (SLE)

DME required.		ODALS	MISSED APPROACH: Climb to 2400 on I-SLE Localizer SE course to LOTKE INT/ I-SLE 6.9 DME and hold.		
When local altimeter setting not received, use Mc Minnville altimeter setting: Increase all MDA 60 feet; increase S-13 Cat C/D visibility to 1 1/2 SM and Circling Cat C visibility to 2 1/2 SM. For inop ALS, increase S-13 Cat C and D visibility to 1 1/2 SM. For inop ALS when using Mc Minnville altimeter setting, increase S-13 Cat D visibility to 1 3/8 SM. Rwy 13 helicopter visibility reduction below 3/4 SM NA.	ATIS 124.55	SEATTLE CENTER 125.8 291.7	SALEM TOWER ★ 119.1 (CTAF) 0 257.2	GND CON 121.9	UNICOM 122.95



BACK COURSE

Procedure NA for arrival at UBG VOR/DME on V182 northeast bound.



CATEGORY	A	B	C	D
S-13	600-3/4	396 (400-3/4)	600-1	396 (400-1)
CIRCLING	900-1 686 (700-1)	960-1 746 (800-1)	1060-2 1/2 846 (900-2 1/2)	1260-3 1046 (1100-3)

NW-1, 18 JUN 2020 to 16 JUL 2020

NW-1, 18 JUN 2020 to 16 JUL 2020